

Mise en valeur et explicitation d'édifices
sportifs remarquables de la région Grand-Est :
LABEL ACR & JO 2024



architecture
contemporaine
remarquable



MINISTÈRE
DE LA CULTURE

*Liberté
Égalité
Fraternité*

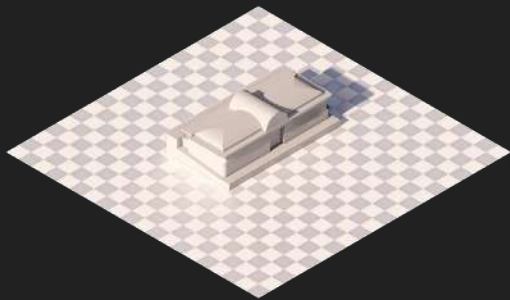


Label « Architecture contemporaine remarquable »

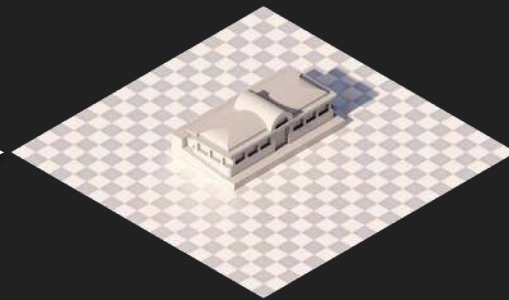
est attribué aux immeubles, aux **ensembles architecturaux**, aux **ouvrages d'art** et aux **aménagements** faisant antérieurement l'objet du label « Patrimoine du XXe siècle » qui ne sont **pas classés ou inscrits** au titre des monuments historiques, parmi les réalisations de moins de **100 ans** d'âge, dont la conception présente un **intérêt architectural ou technique** suffisant.



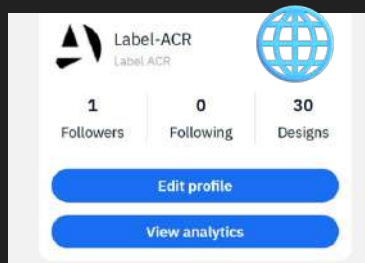
Étude des archives



Maquettes prototypes



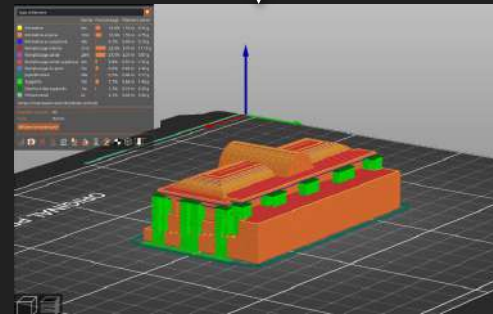
Maquette finale



Communication et mise en ligne des modèles



Impression en 3D



paramétrage impression 3D

LINGOLSHEIM



PISCINE TOURNESOL DE LINGOLSHEIM

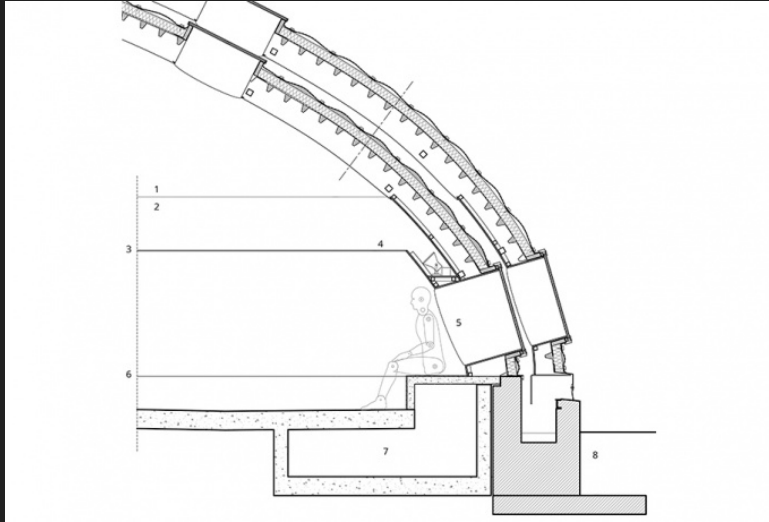
LINGOLSHEIM



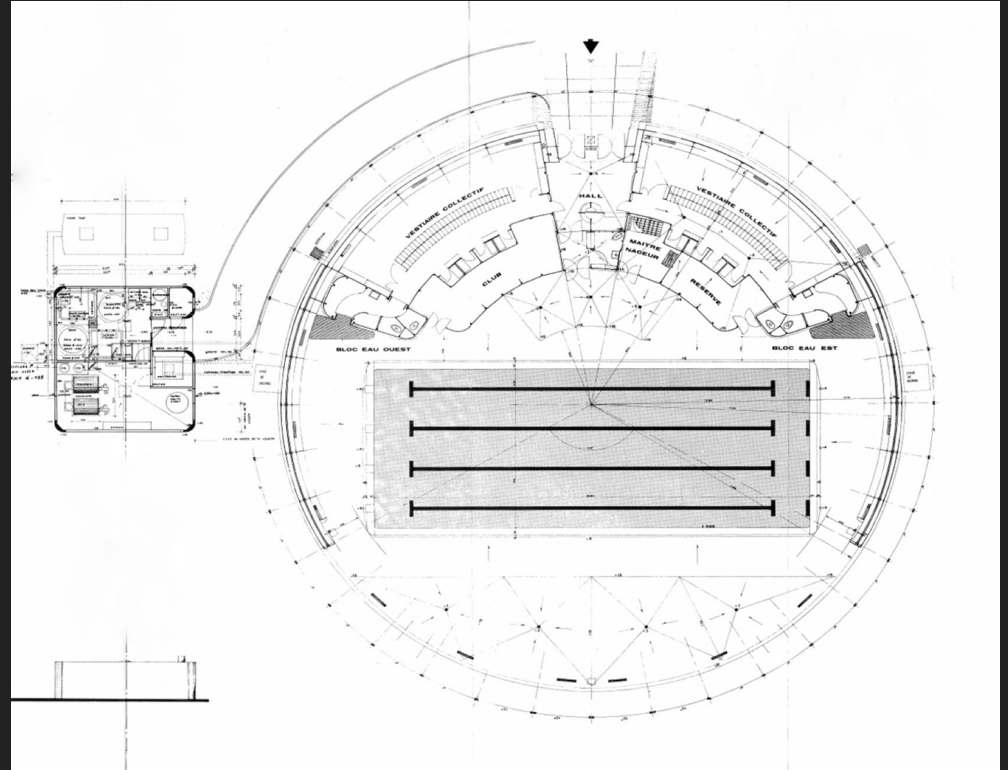
*Vues intérieures / extérieures de la piscine "Tournesol" de Lingolsheim.
(J.B. DORNER)*

DOCUMENTS D'ARCHIVES

LINGOLSHEIM

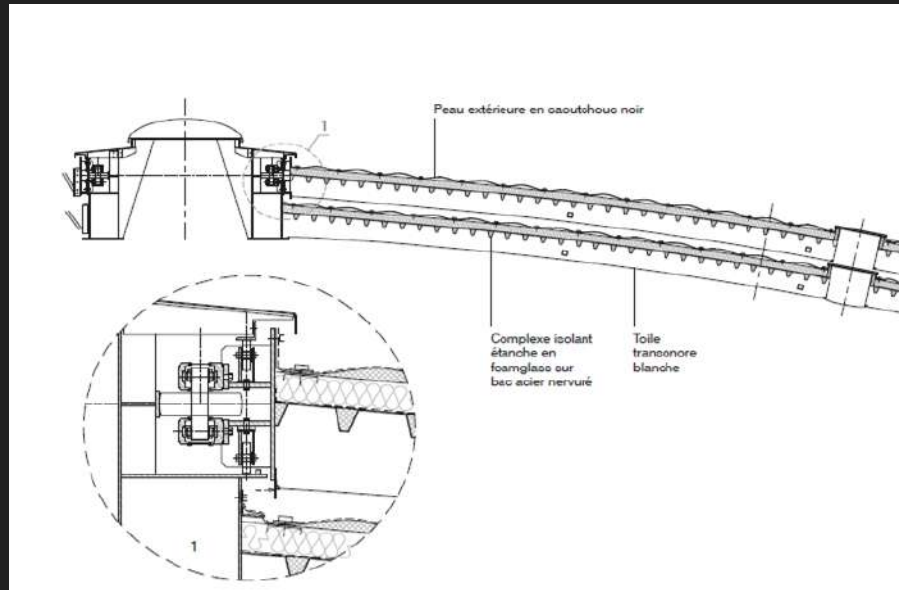


*Plans généraux cotés, et détail structurel
de l'appui du "tournesol".
(P. DAHAN, agence Urbane Kultur)*

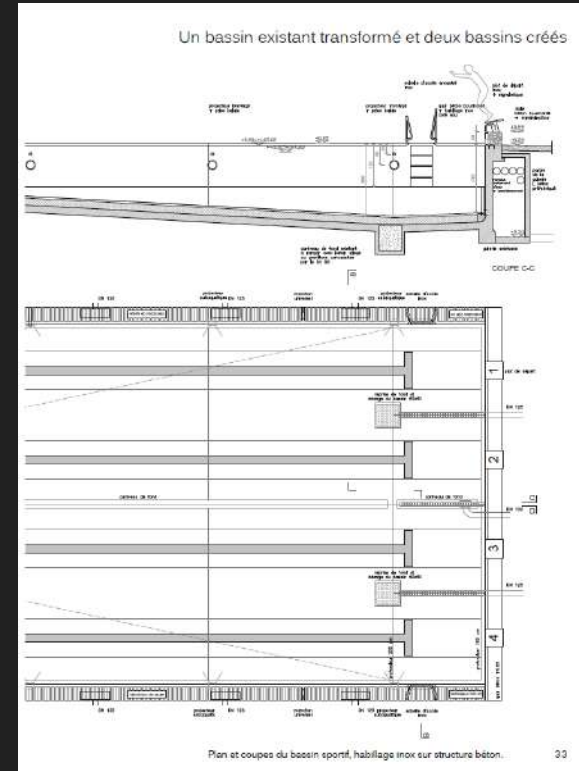


DOCUMENTS D'ARCHIVES

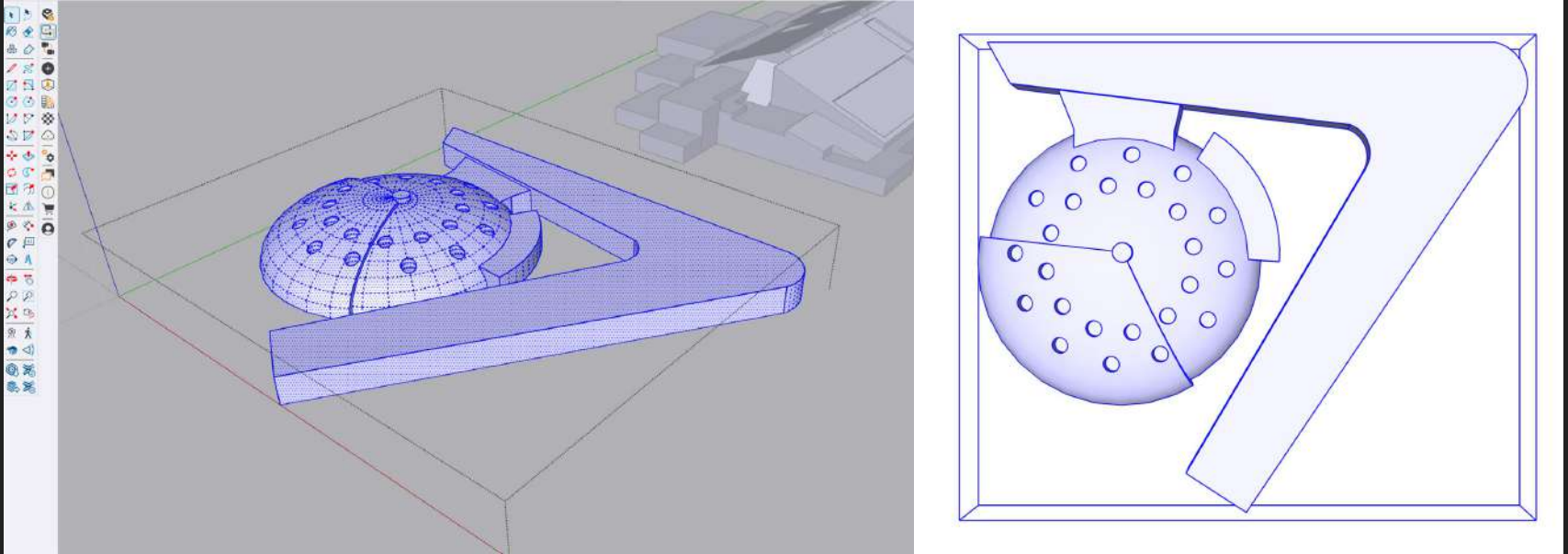
LINGOLSHEIM



*Plan du grand bassin, coté, et détail structurel du mécanisme de rotation du "tournesol".
(P. DAHAN, agence Urbane Kultur)*

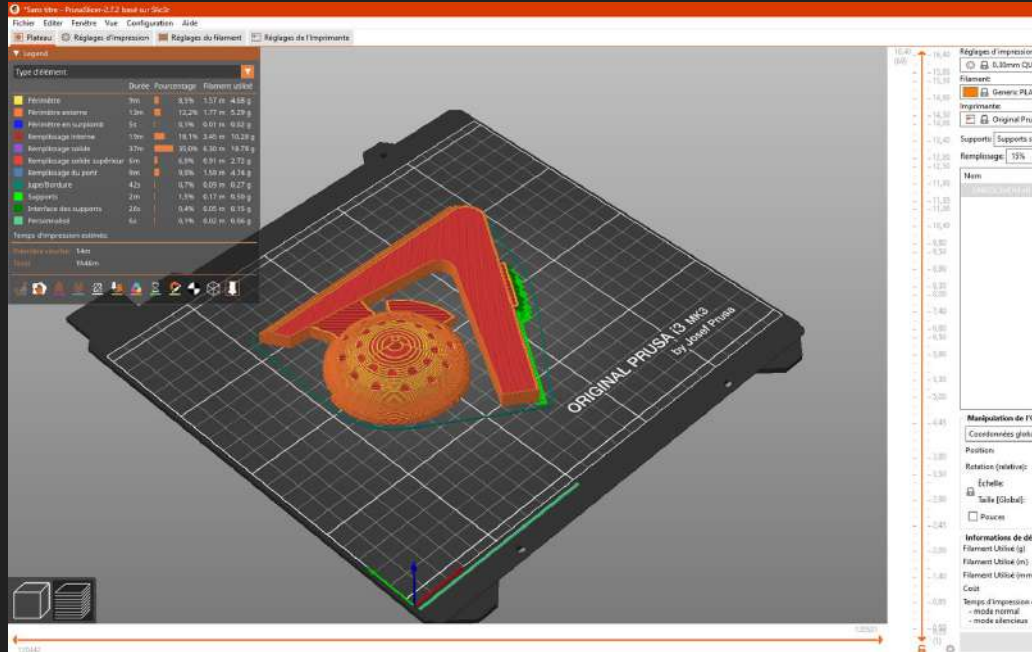


LINGOLSHEIM



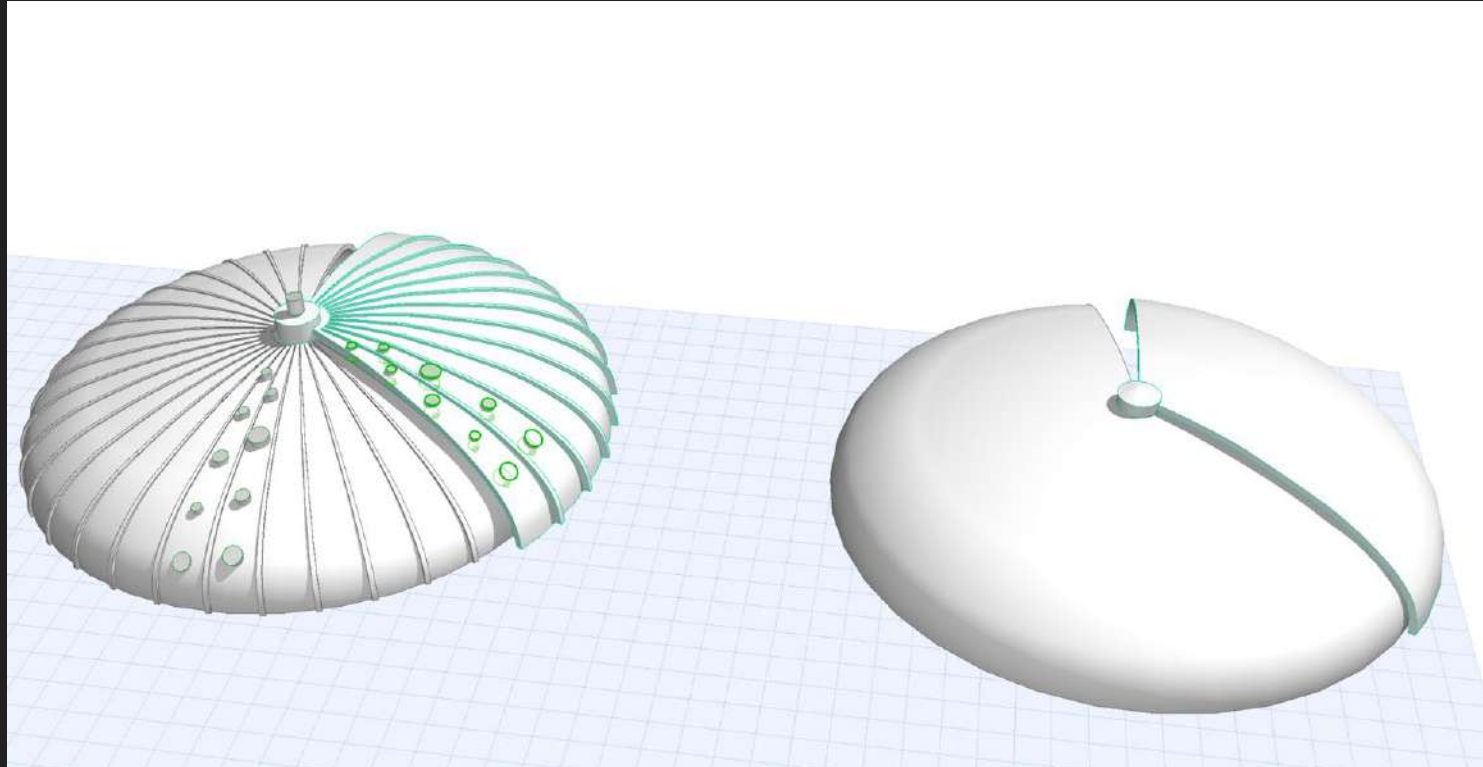
MAQUETTE VOLUME

LINGOLSHEIM



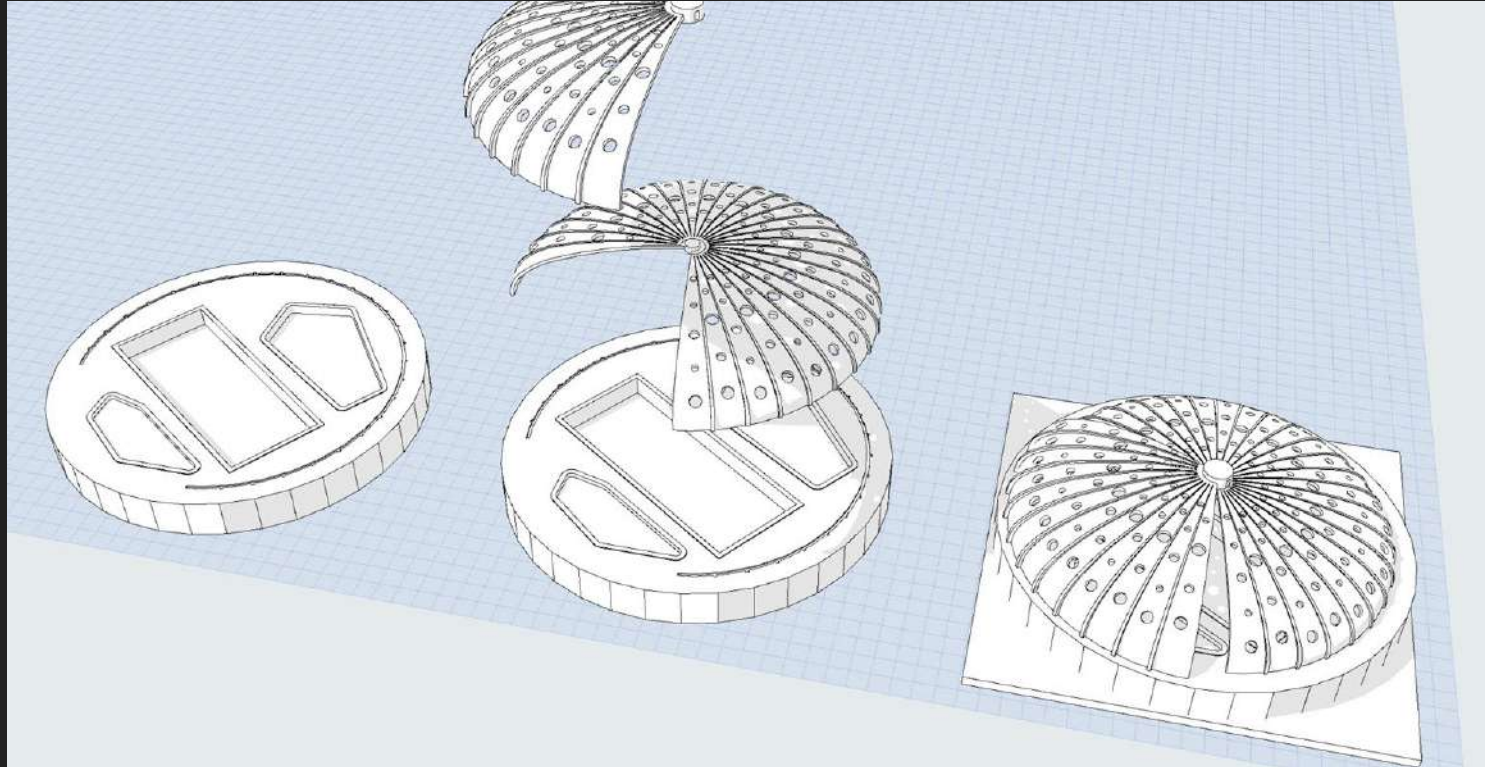
MAQUETTE VOLUME

LINGOLSHEIM



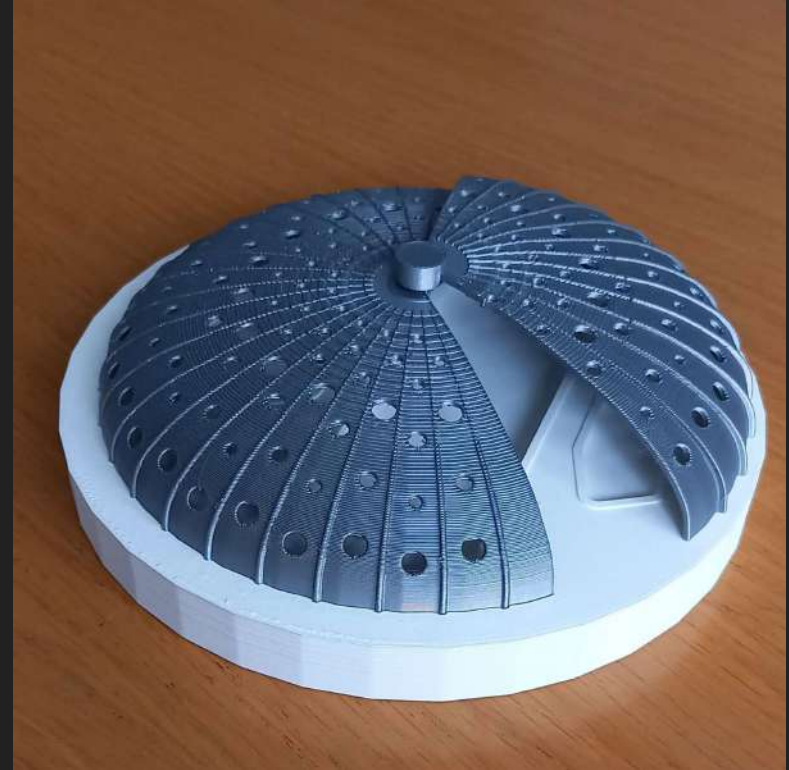
MAQUETTE USAGE

LINGOLSHEIM



MAQUETTE USAGE

LINGOLSHEIM



MAQUETTE USAGE

LONGWY



COMPLEXE SPORTIF DES RÉCOLLETS

LONGWY

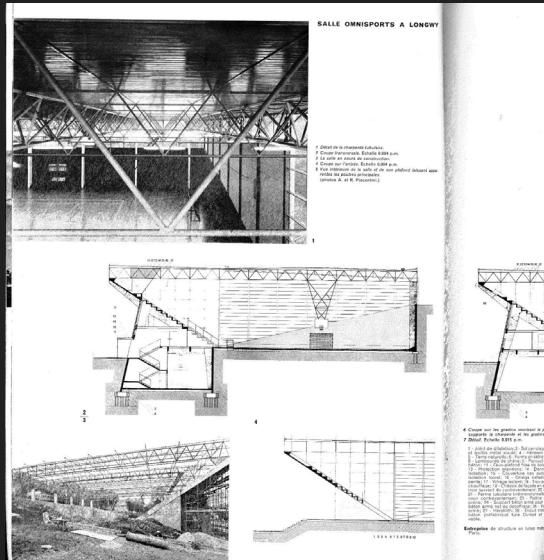


Maquette de projet, A. Filliatre, 1969.

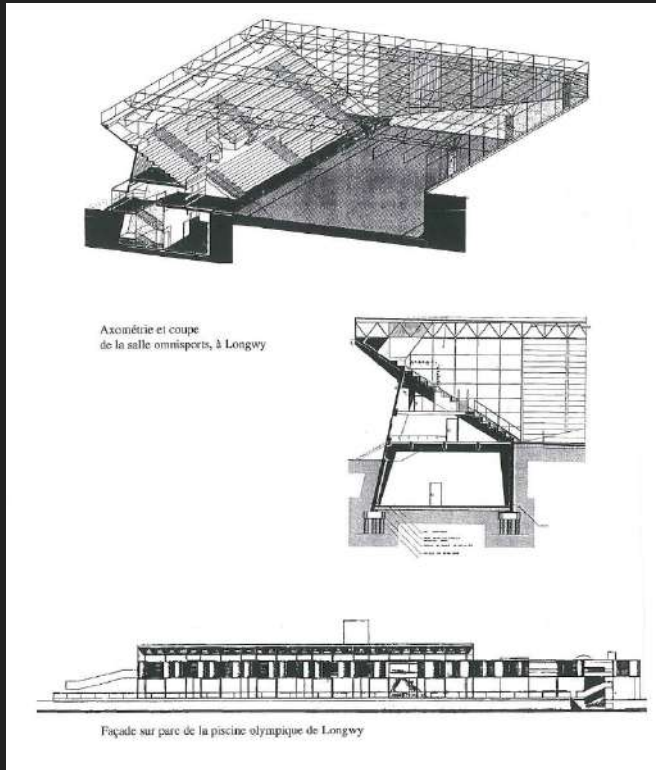


Exposition André Filliatre, CAUE 54, septembre 2003

LONGWY

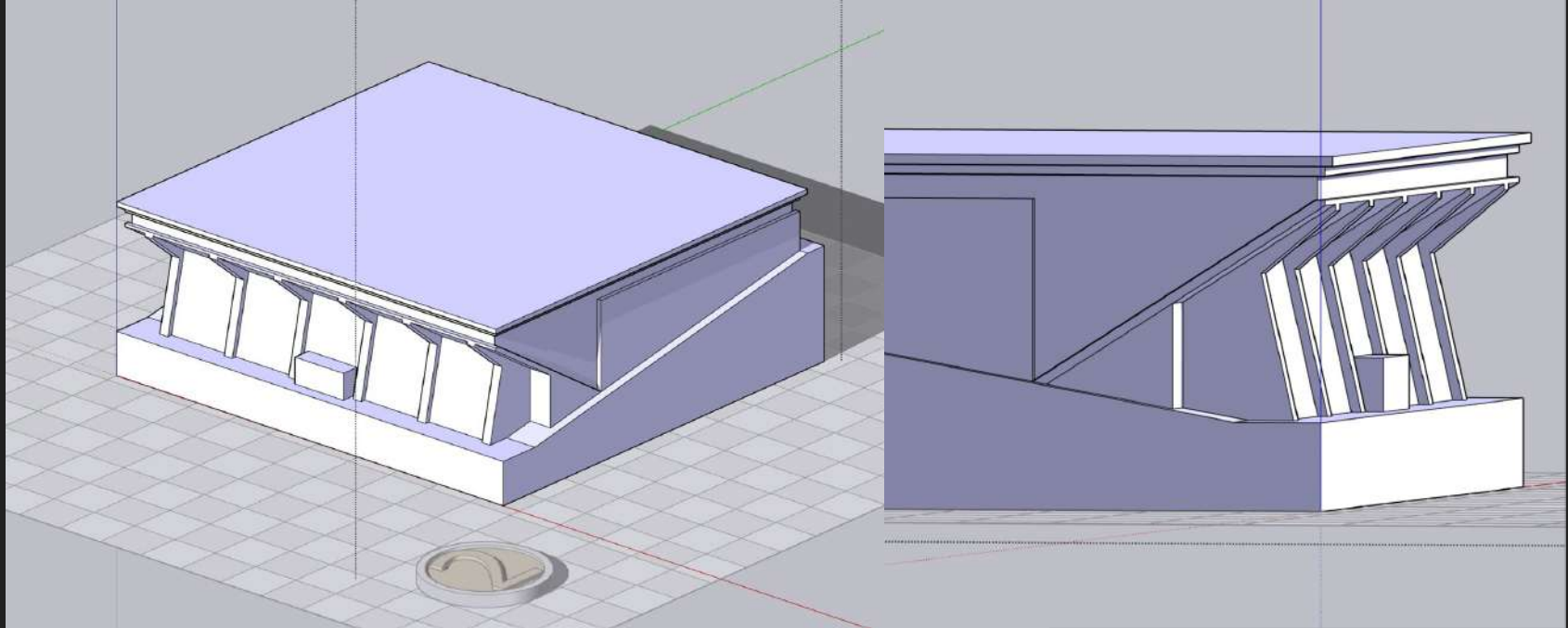


Techniques et Architecture,
28e série, n°5 novembre
1967



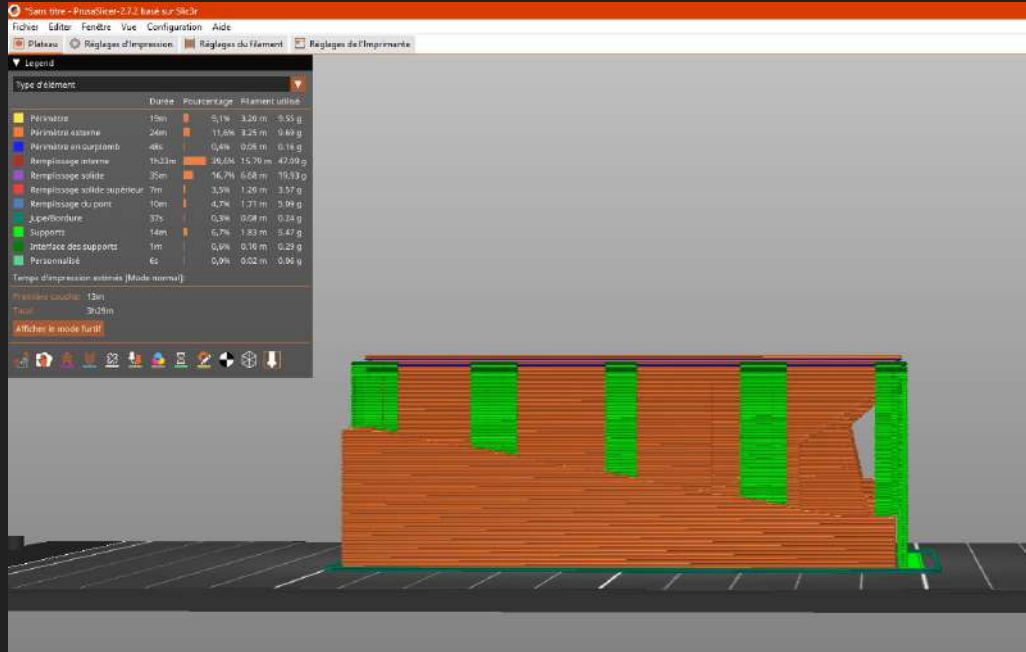
DOCUMENTS D'ARCHIVES

LONGWY



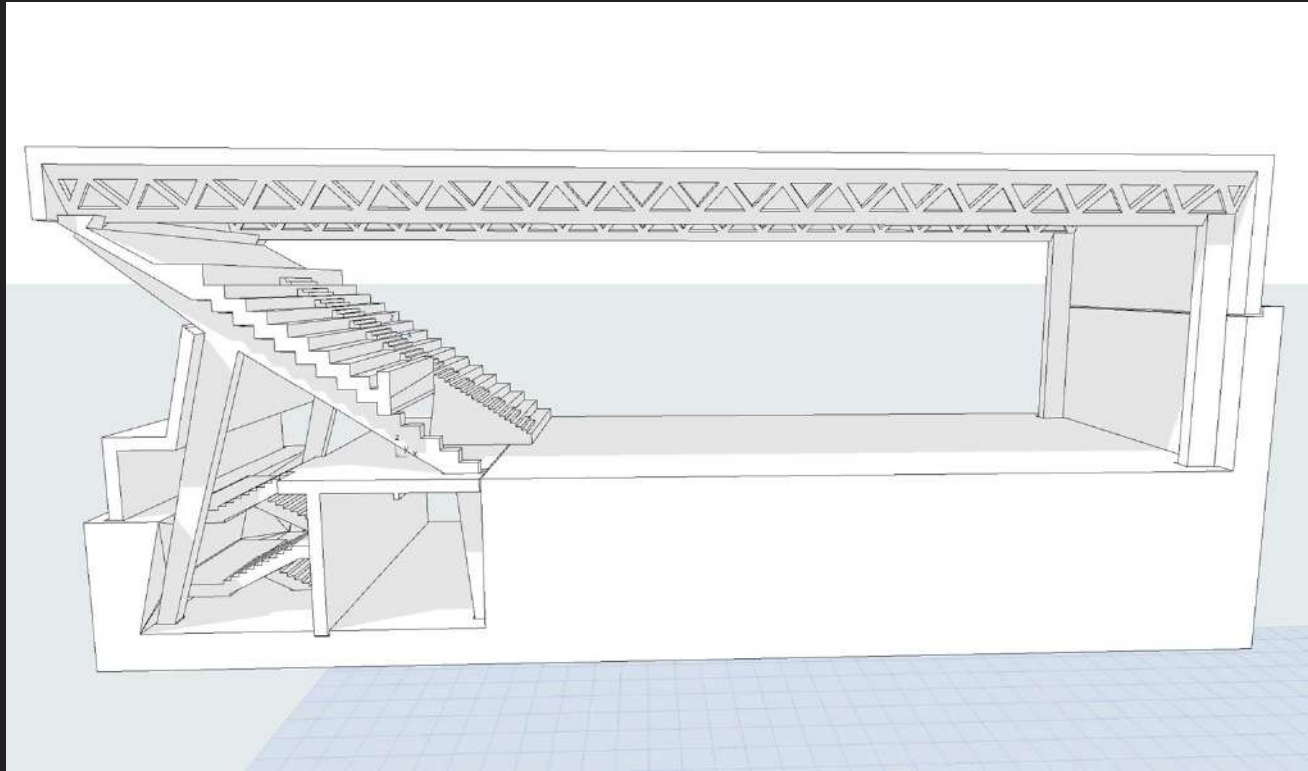
MAQUETTE VOLUME

LONGWY



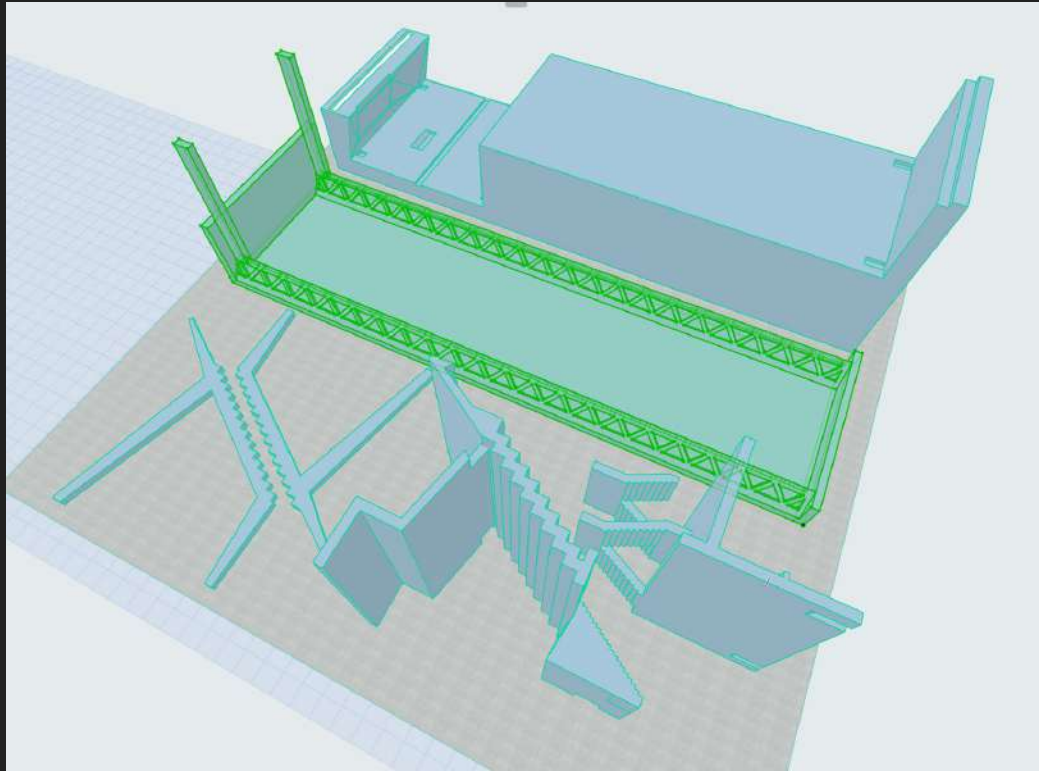
MAQUETTE VOLUME

LONGWY



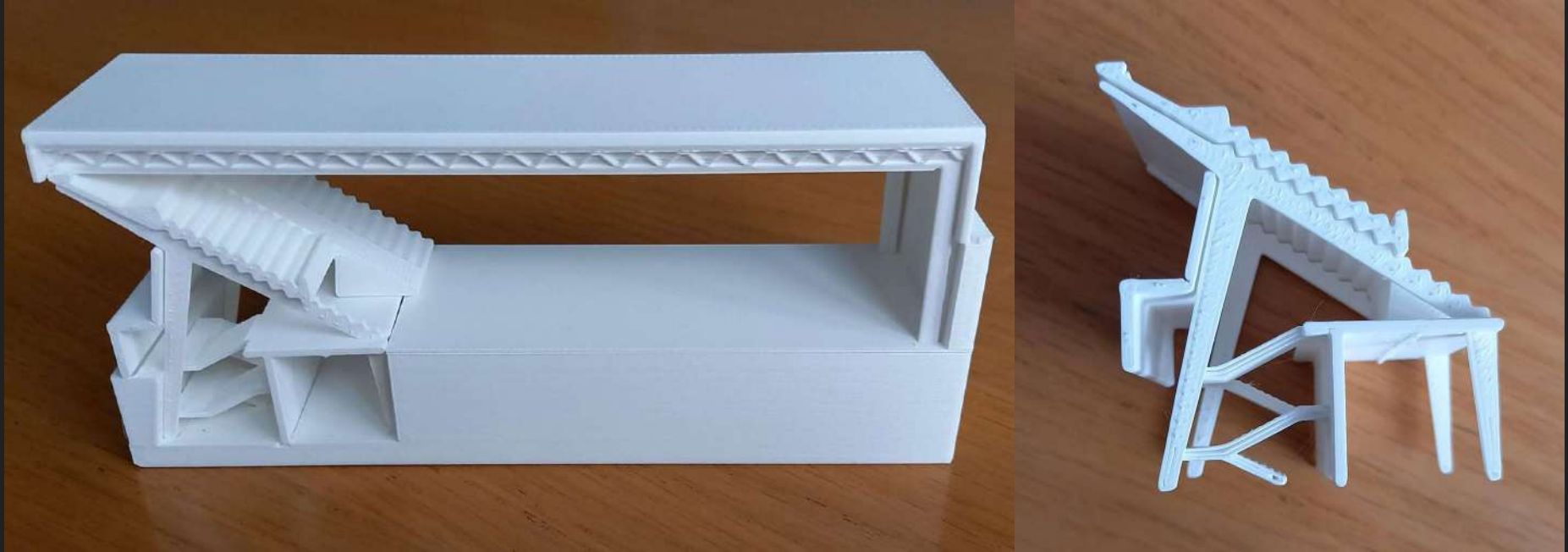
MAQUETTE USAGE

LONGWY



MAQUETTE USAGE

LONGWY



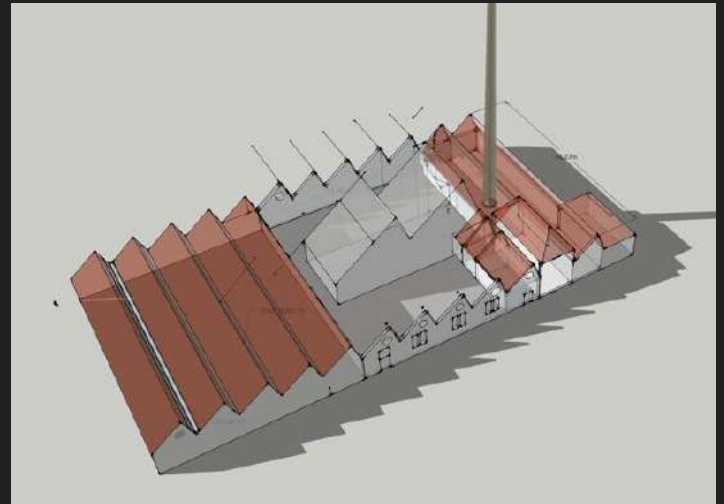
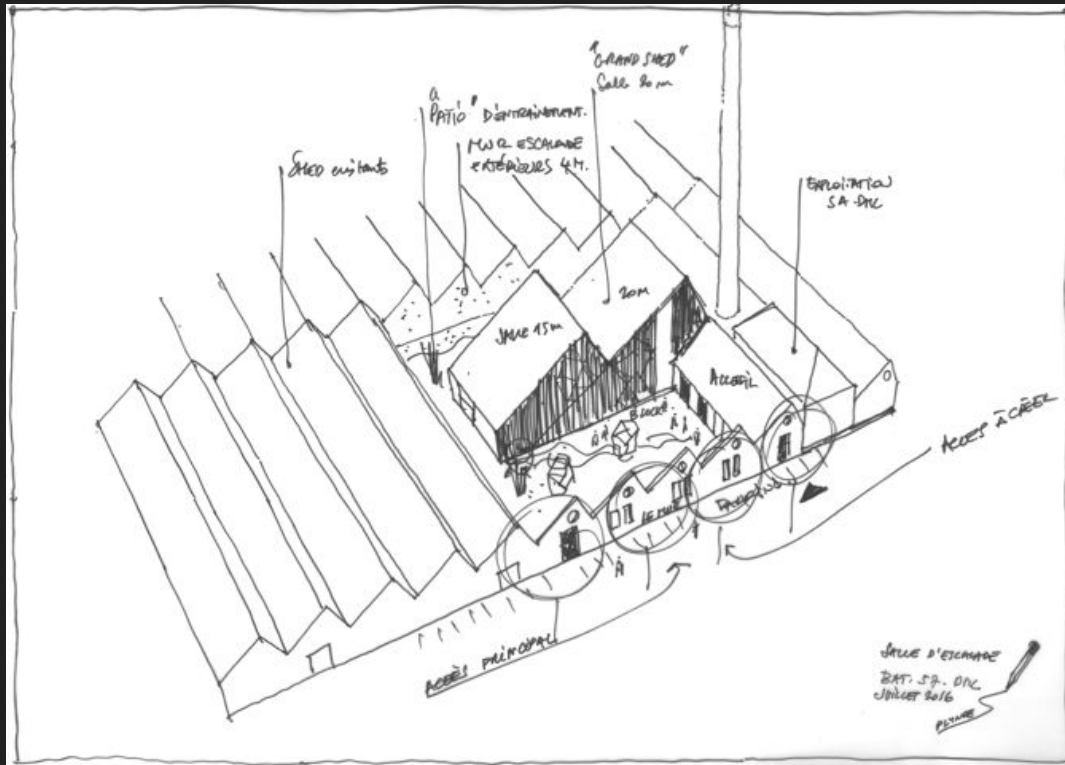
MAQUETTE USAGE

MULHOUSE



CMC – CLIMBING MULHOUSE CENTER

MULHOUSE



*FUAA Architectes, Mulhouse (68).
Projet de réhabilitation de 2016.*

DOCUMENTS D'ARCHIVES

MULHOUSE



*Vue, depuis l'entrée du site,
du grand mur extérieur
← (B.COLL)*



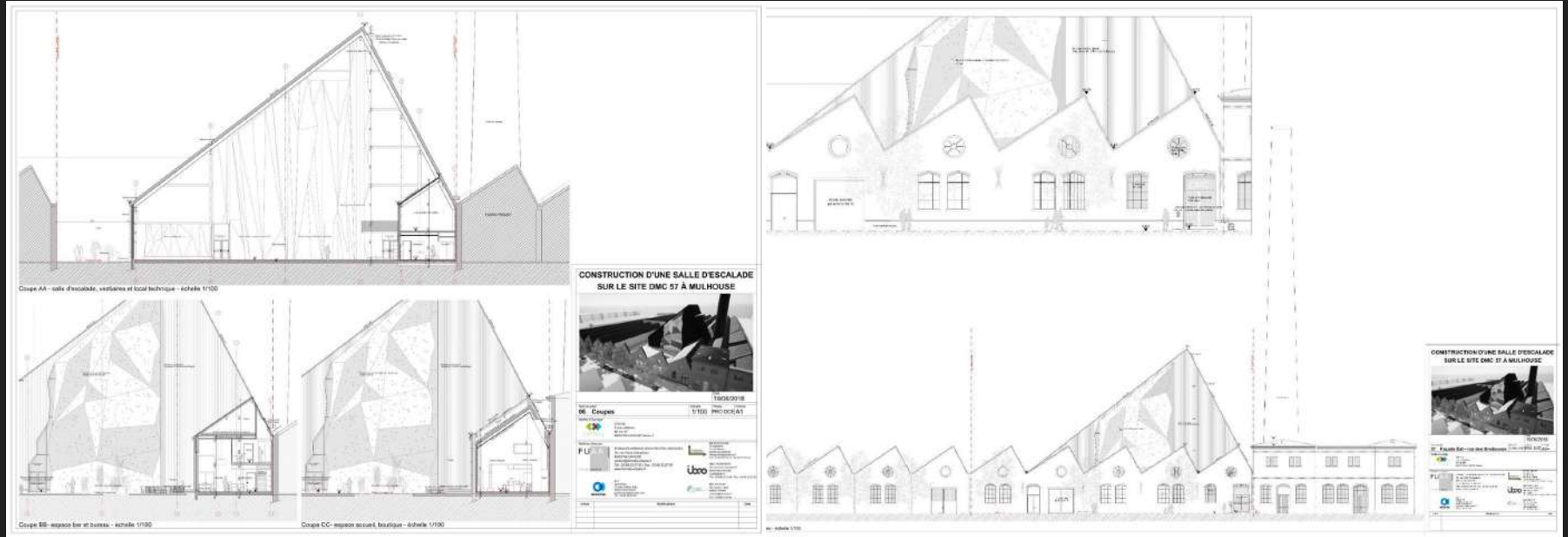
*Vue intérieure du grand
mur d'escalade intérieur
(D. GIANNELLI) →*

*Vue, depuis l'entrée, du
petit mur d'entraînement
← (B.COLL)*



DOCUMENTS D'ARCHIVES

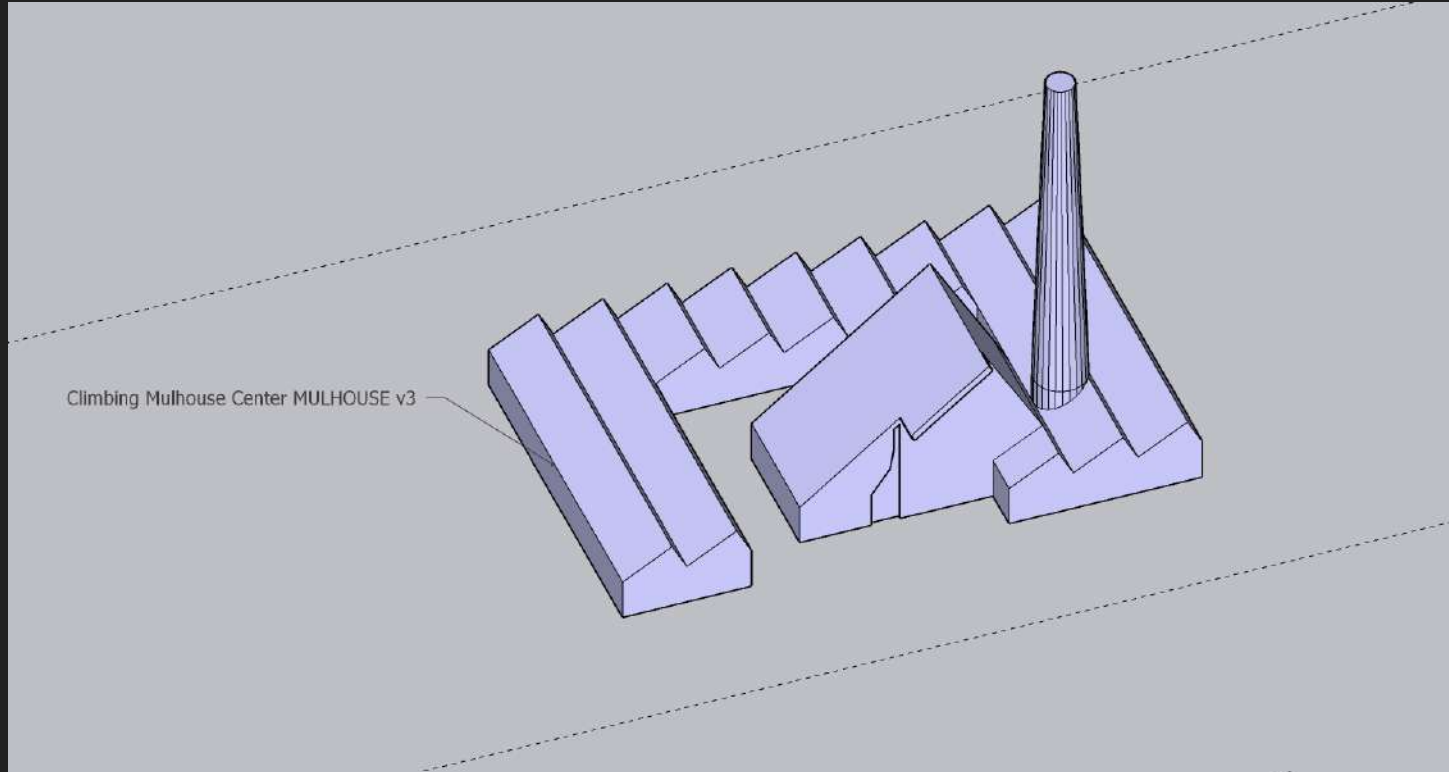
MULHOUSE



*Plans techniques d'architecture : coupes de principe intérieur, façade sur rue principale.
(B.COLL, FUA Architectes)*

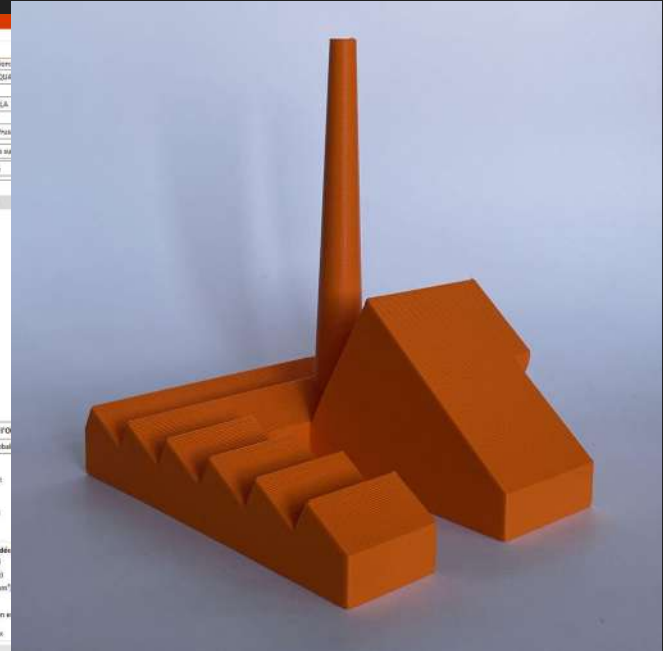
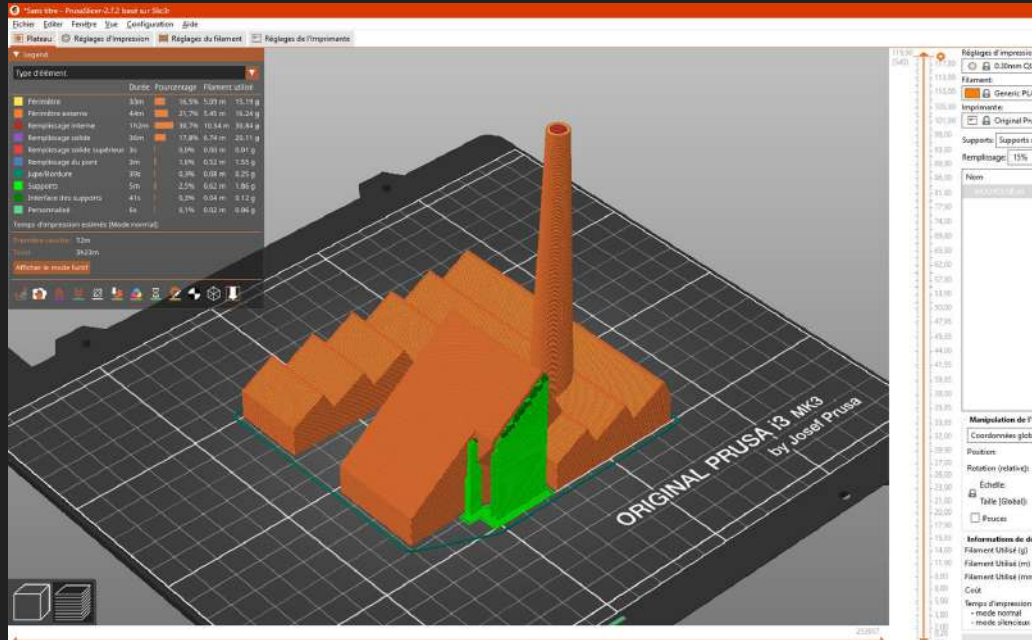
DOCUMENTS D'ARCHIVES

MULHOUSE



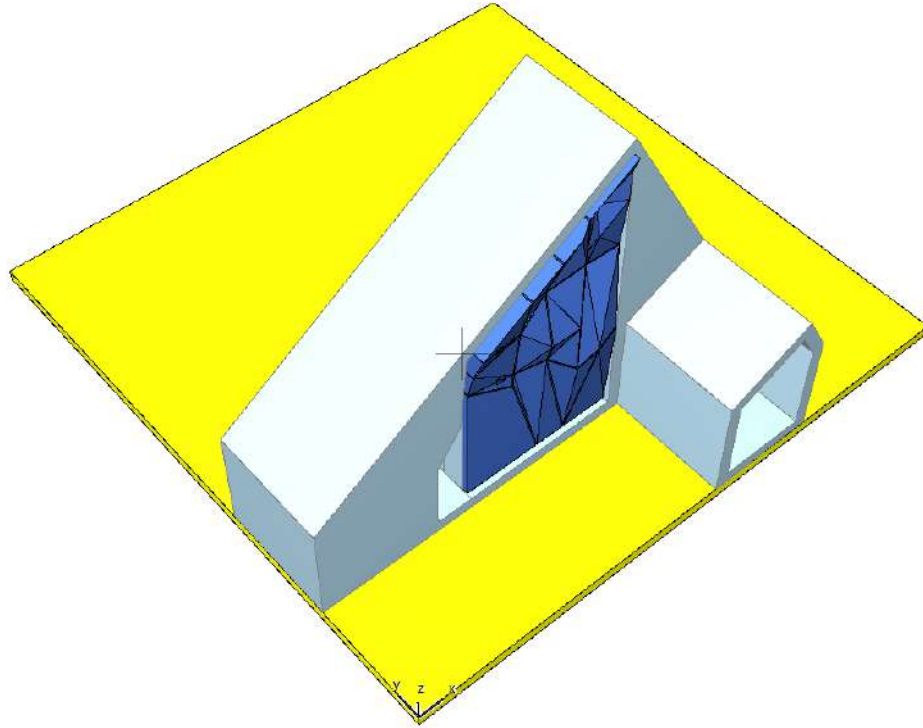
MAQUETTE VOLUME

MULHOUSE



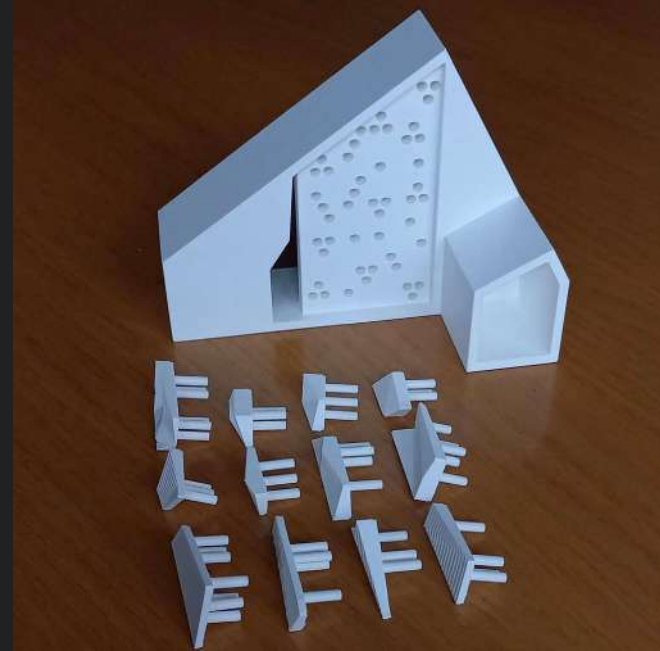
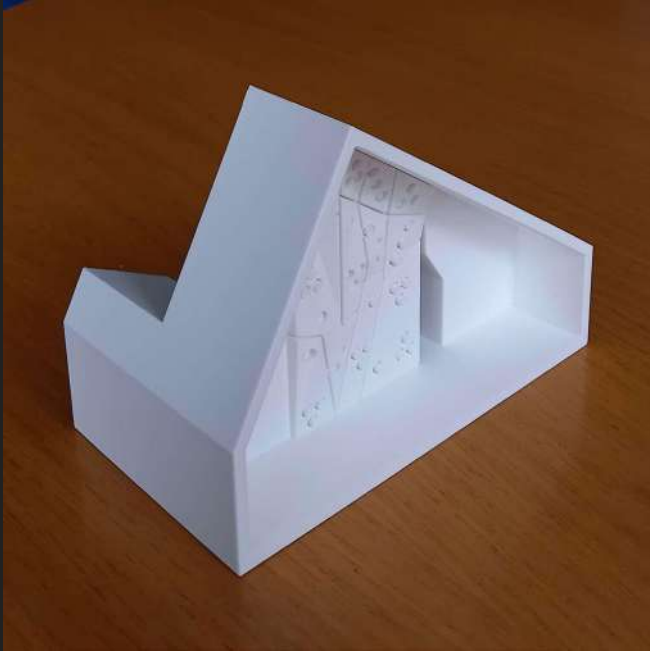
MAQUETTE VOLUME

MULHOUSE



MAQUETTE USAGE

MULHOUSE



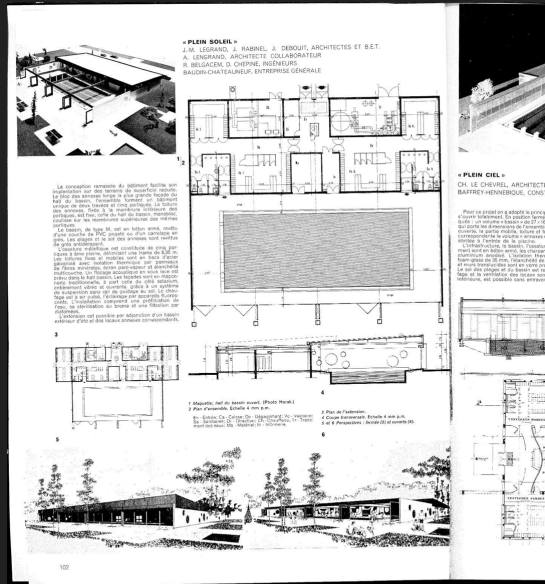
MAQUETTE USAGE

OSTWALD

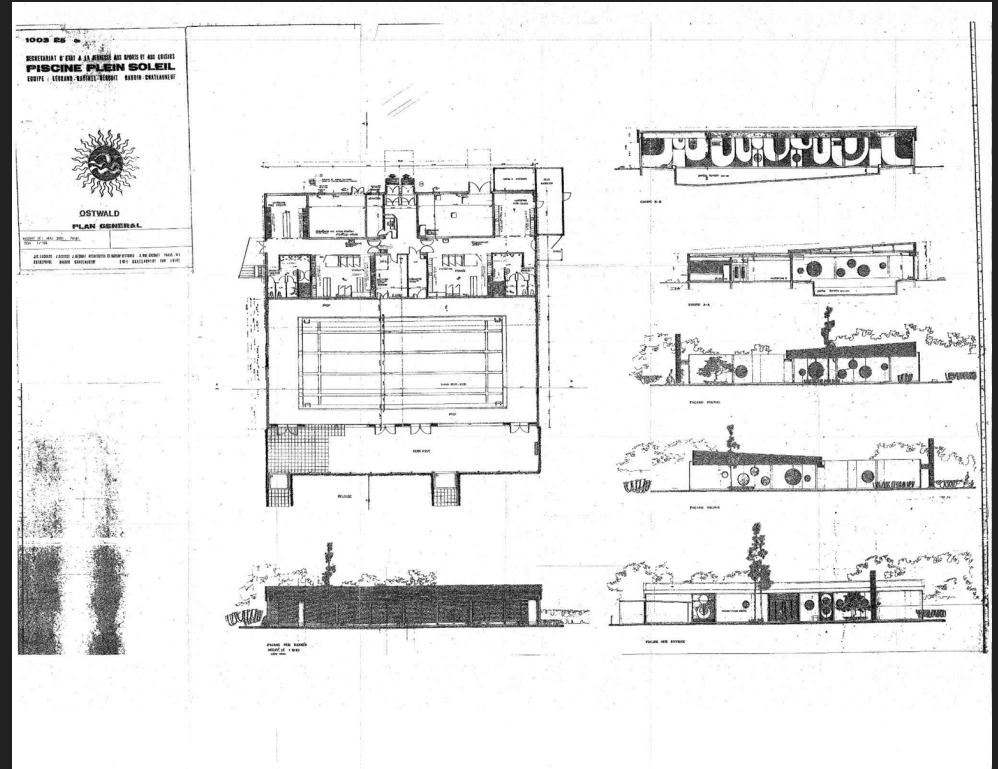


PISCINE PLEIN SOLEIL D'OSTWALD

OSTWALD

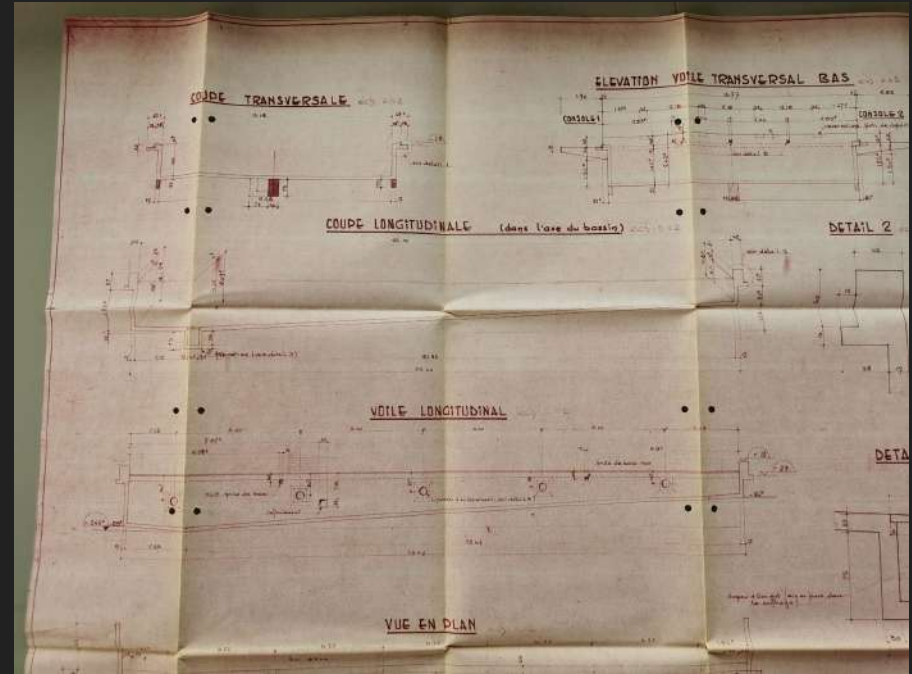
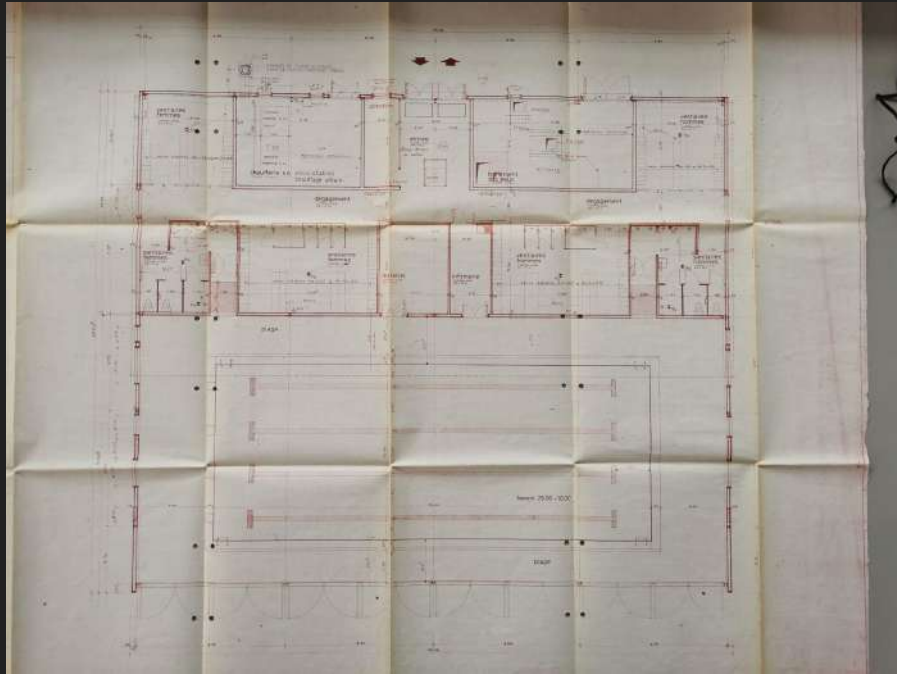


Revue de l'opération "Mille piscines", lancée par l'État en 1969.



DOCUMENTS D'ARCHIVES

OSTWALD

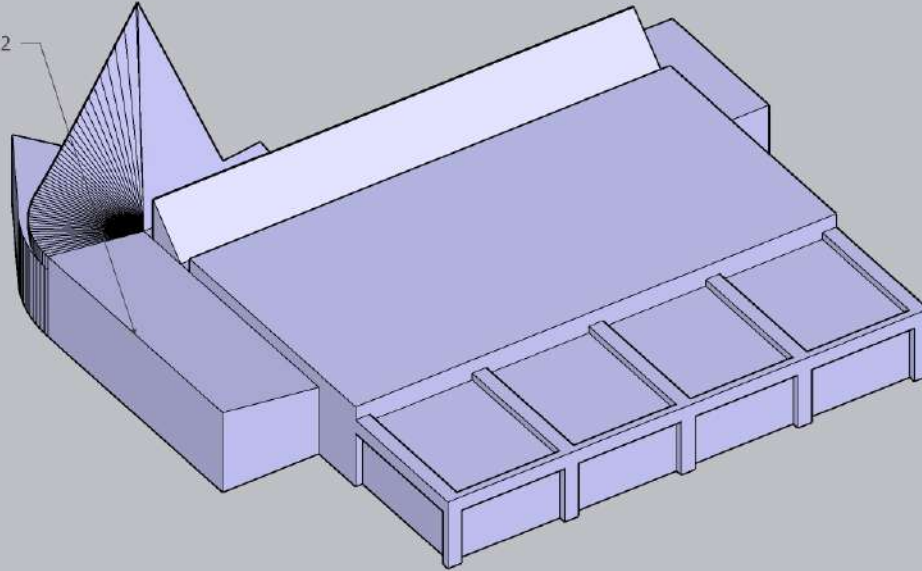


Plans-types d'époque, cotés, archives municipales de Strasbourg (67) et de l'Eurométropole.

DOCUMENTS D'ARCHIVES

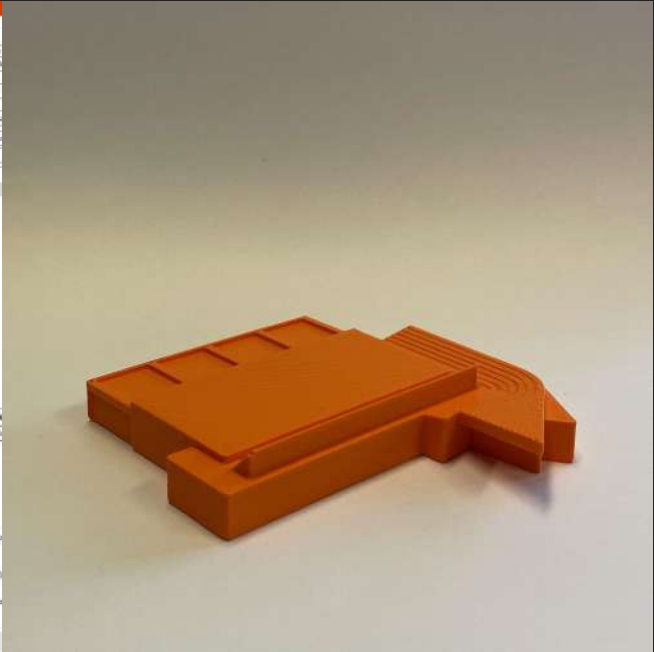
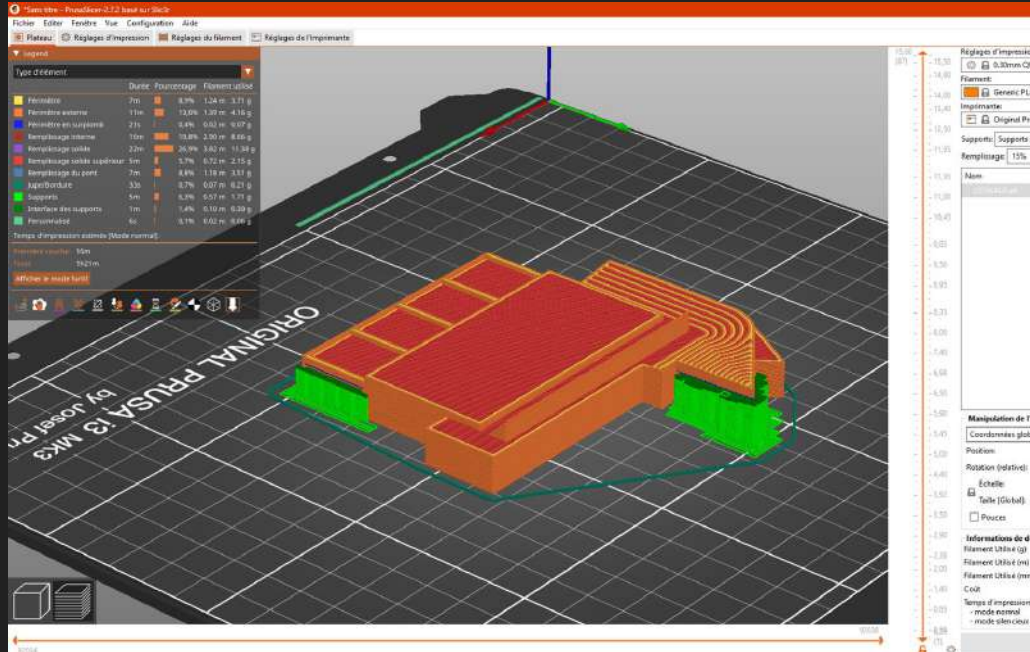
OSTWALD

Piscine de plein air OSTWALD v2



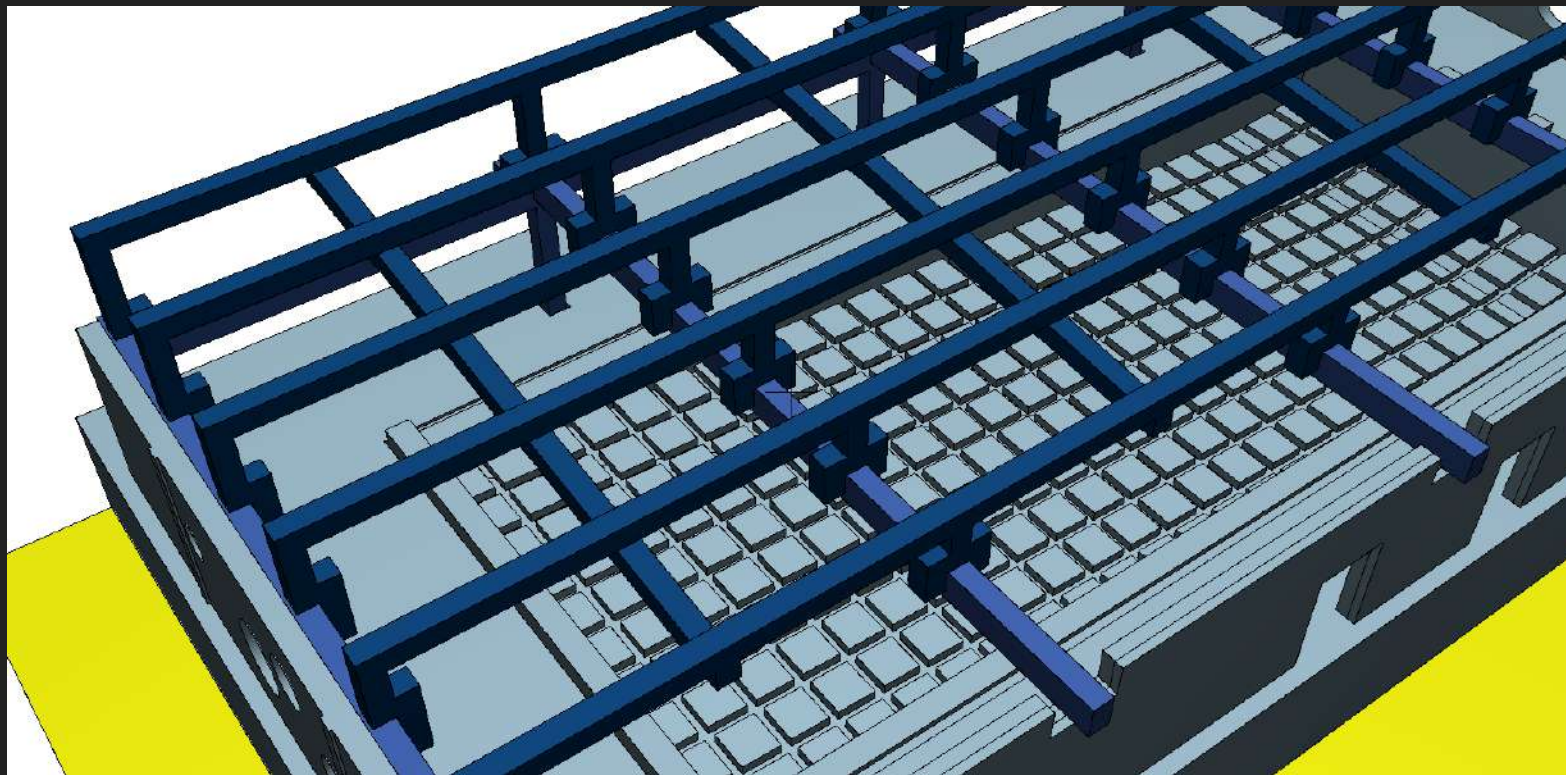
MAQUETTE VOLUME

OSTWALD



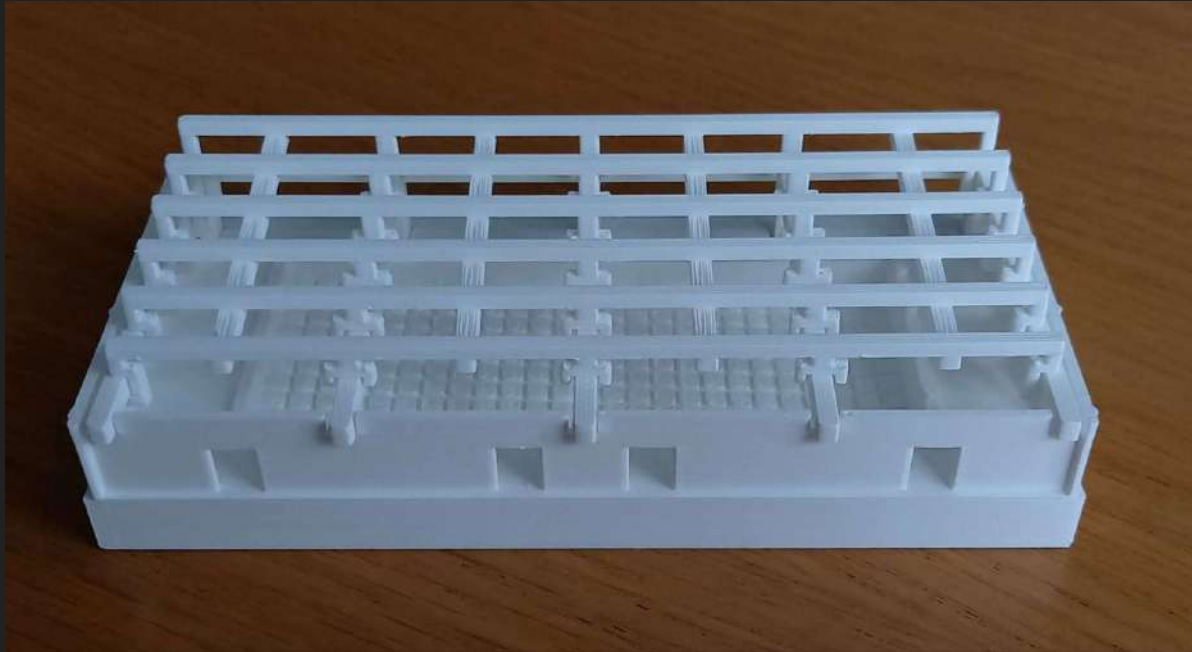
MAQUETTE VOLUME

OSTWALD



MAQUETTE USAGE

OSTWALD



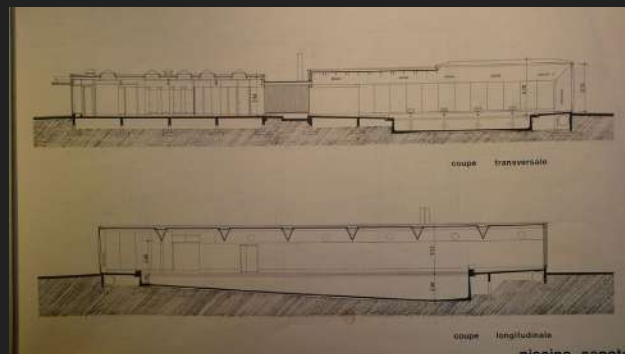
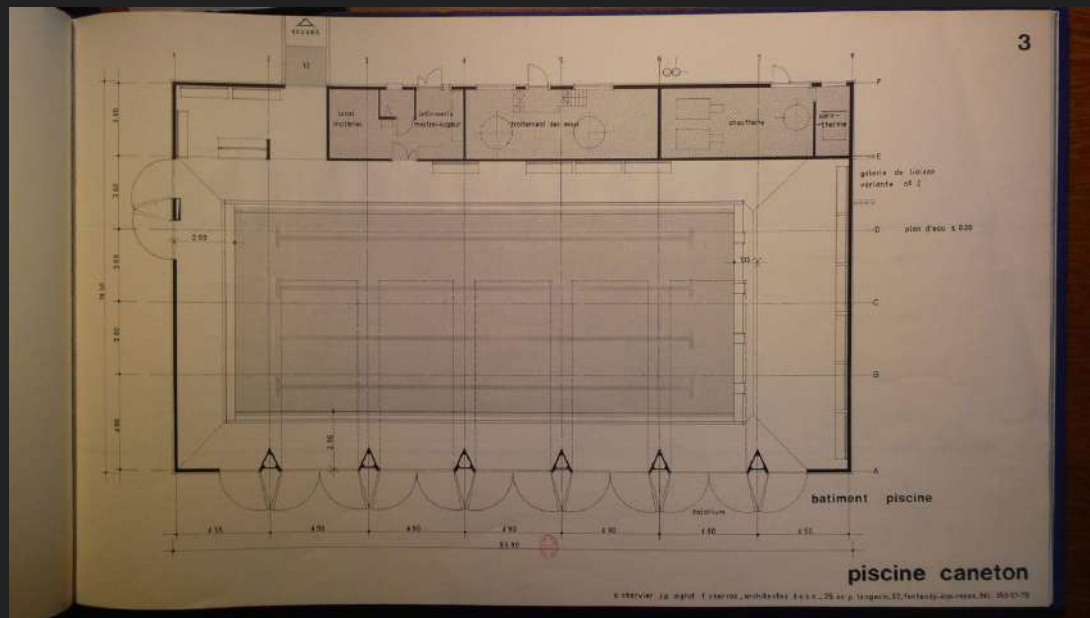
MAQUETTE USAGE

SÉZANNE



PISCINE « CANETON »

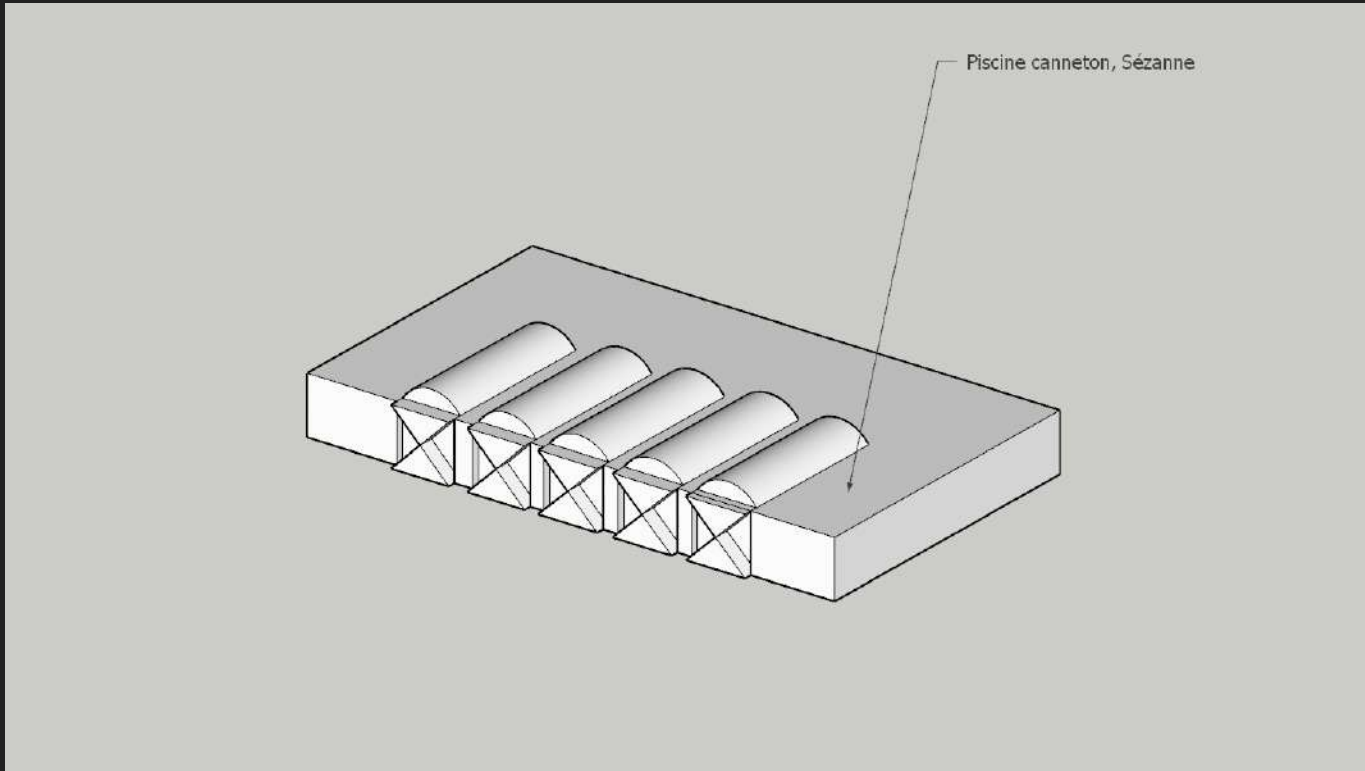
SÉZANNE



*Plans d'époque, cotés, projet de 1978,
Piscine Caneton de Sézanne (10),
Archives de la Bibliothèque Nationale de France.*

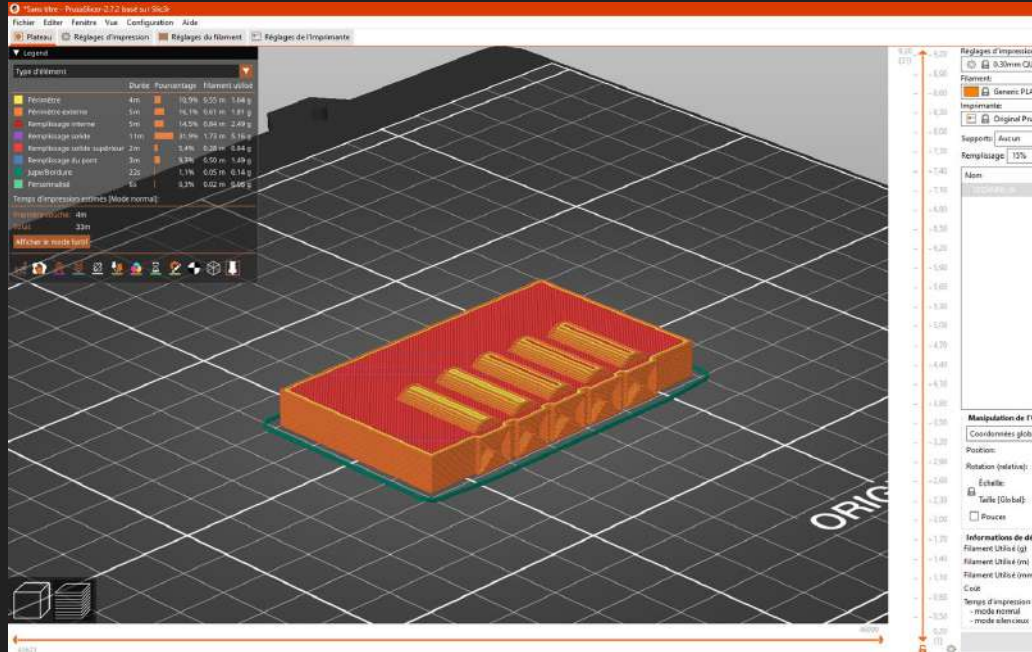
DOCUMENTS D'ARCHIVES

SÉZANNE



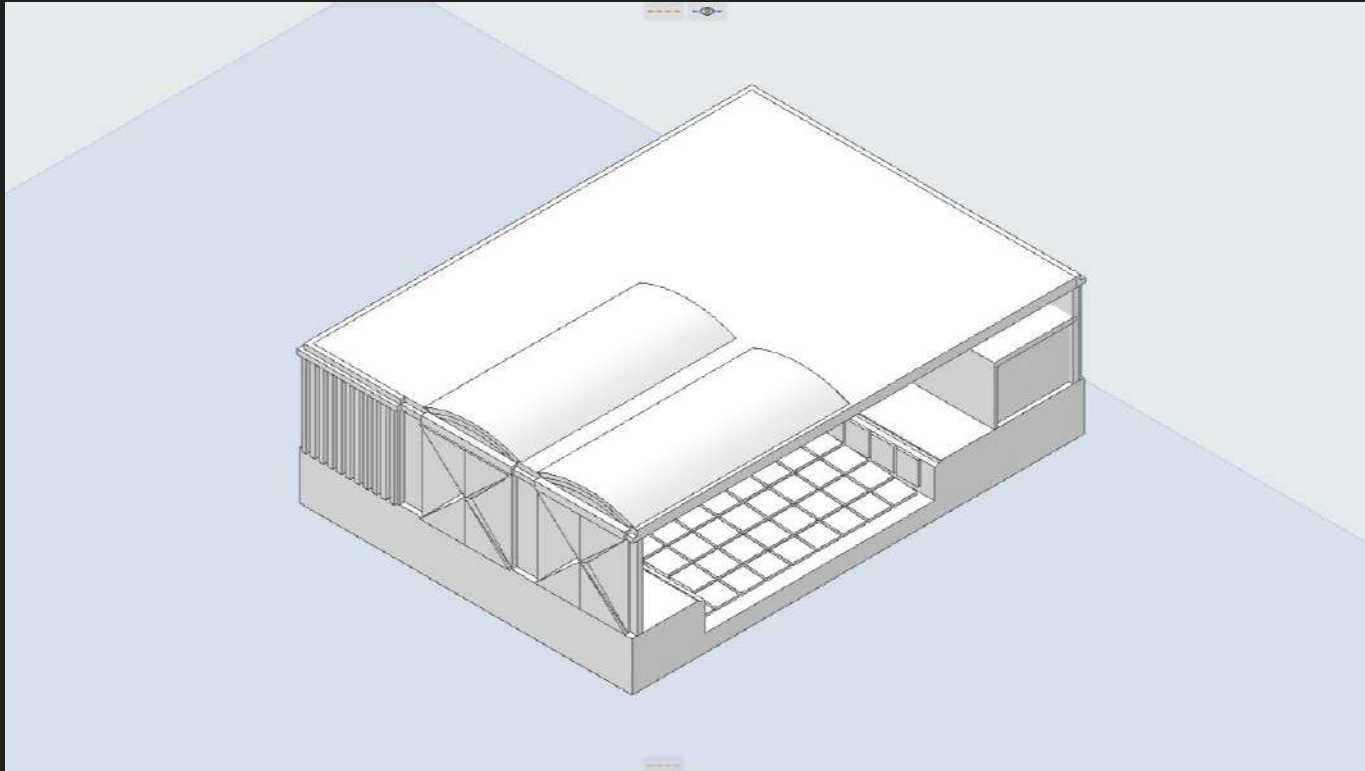
MAQUETTE VOLUME

SÉZANNE



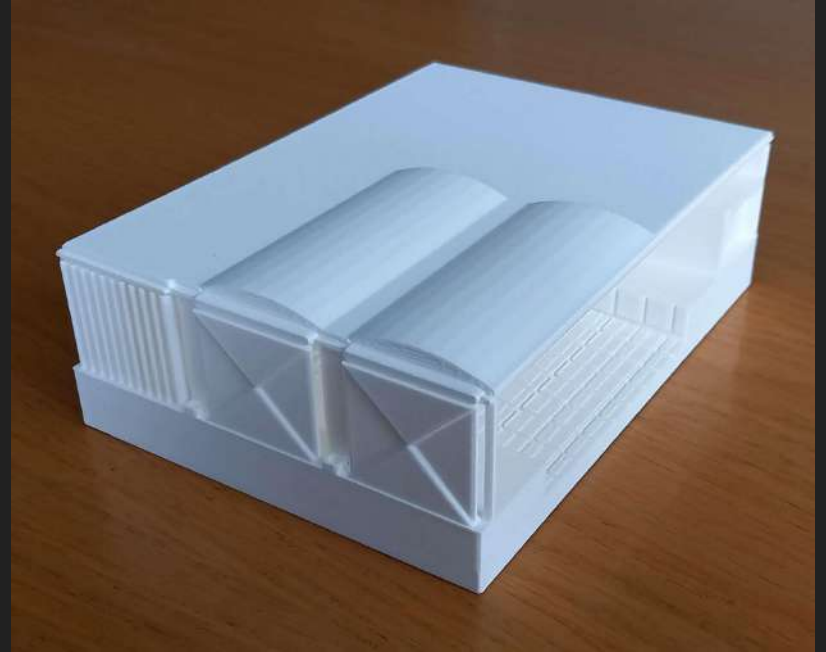
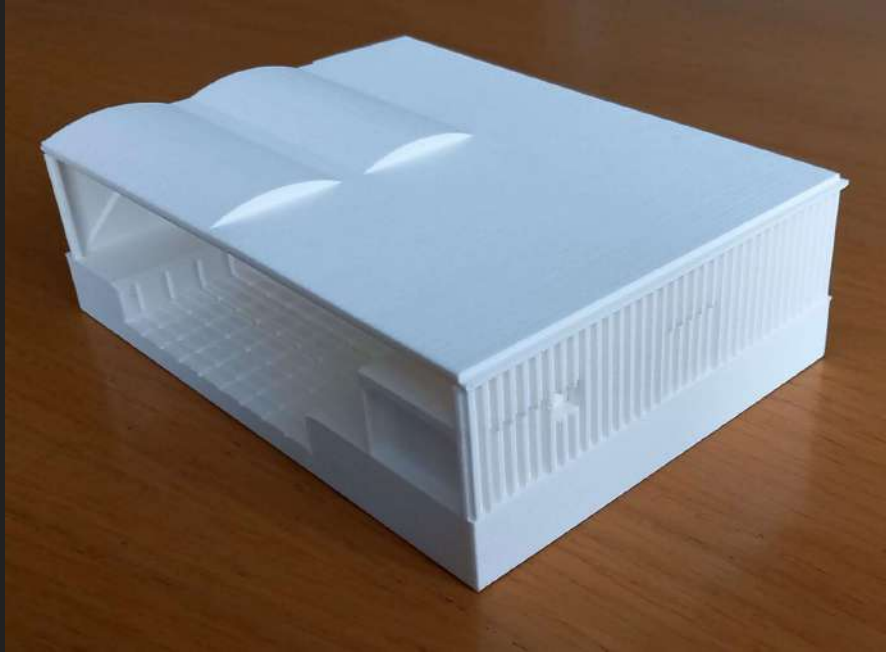
MAQUETTE VOLUME

SÉZANNE



MAQUETTE USAGE

SÉZANNE



MAQUETTE USAGE

TROYES



PISCINE LUCIEN-ZINS

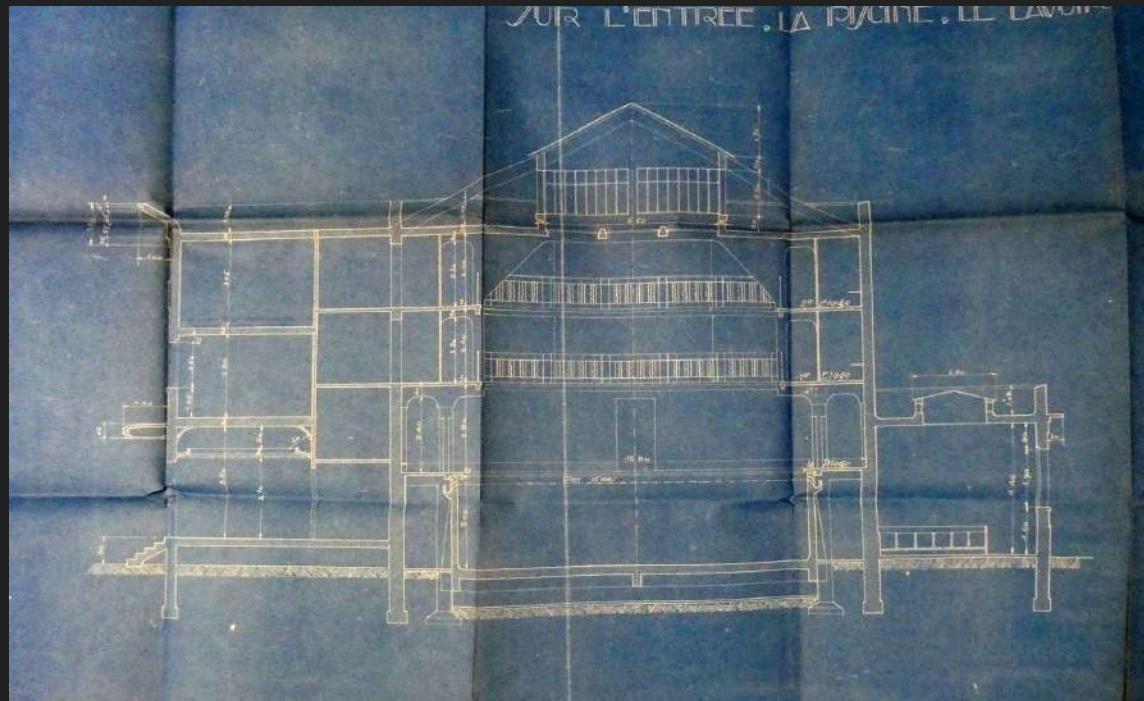
TROYES



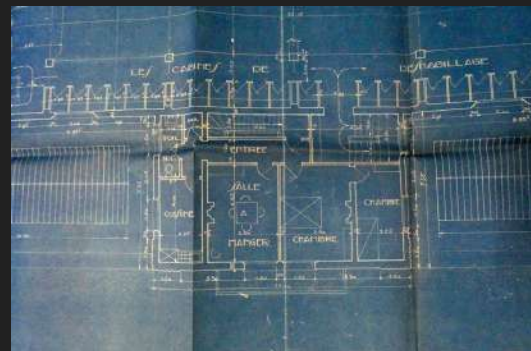
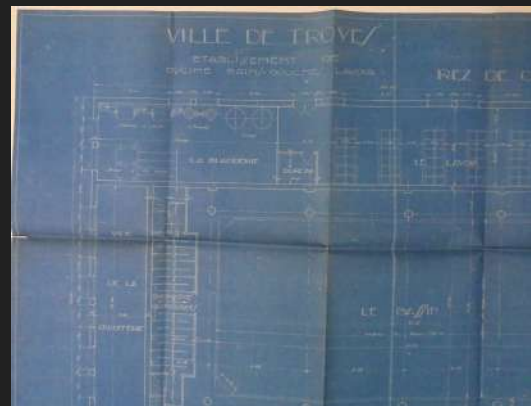
Vues intérieures et extérieures de la piscine Lucien Zins de Troyes (10).

DOCUMENTS D'ARCHIVES

TROYES

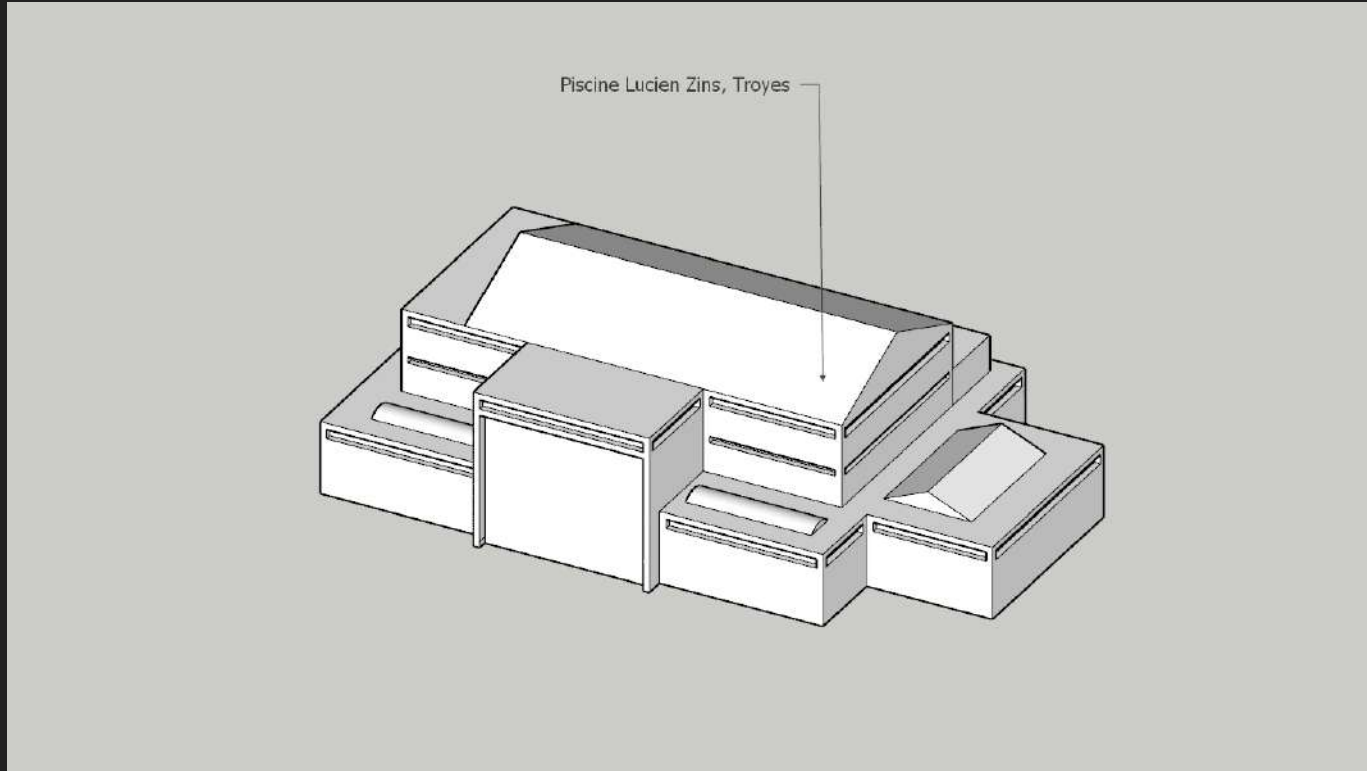


*Plans d'époque, cotés, de construction de la piscine Lucien Zins, 1930.
Archives municipales de Troyes (10).*



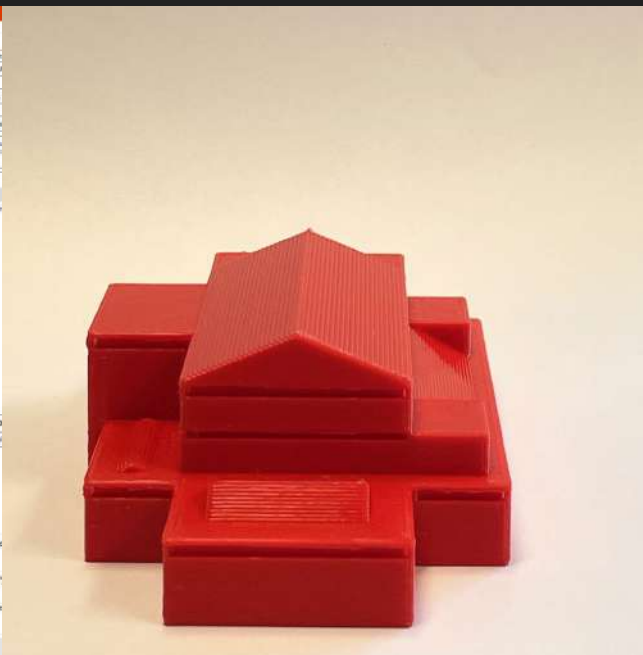
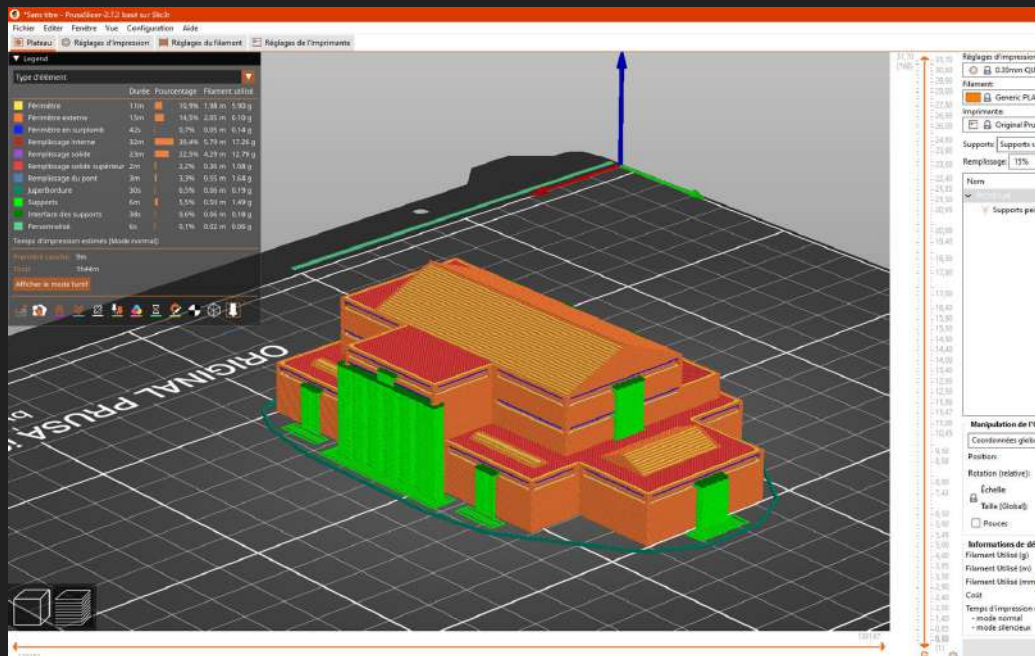
DOCUMENTS D'ARCHIVES

TROYES



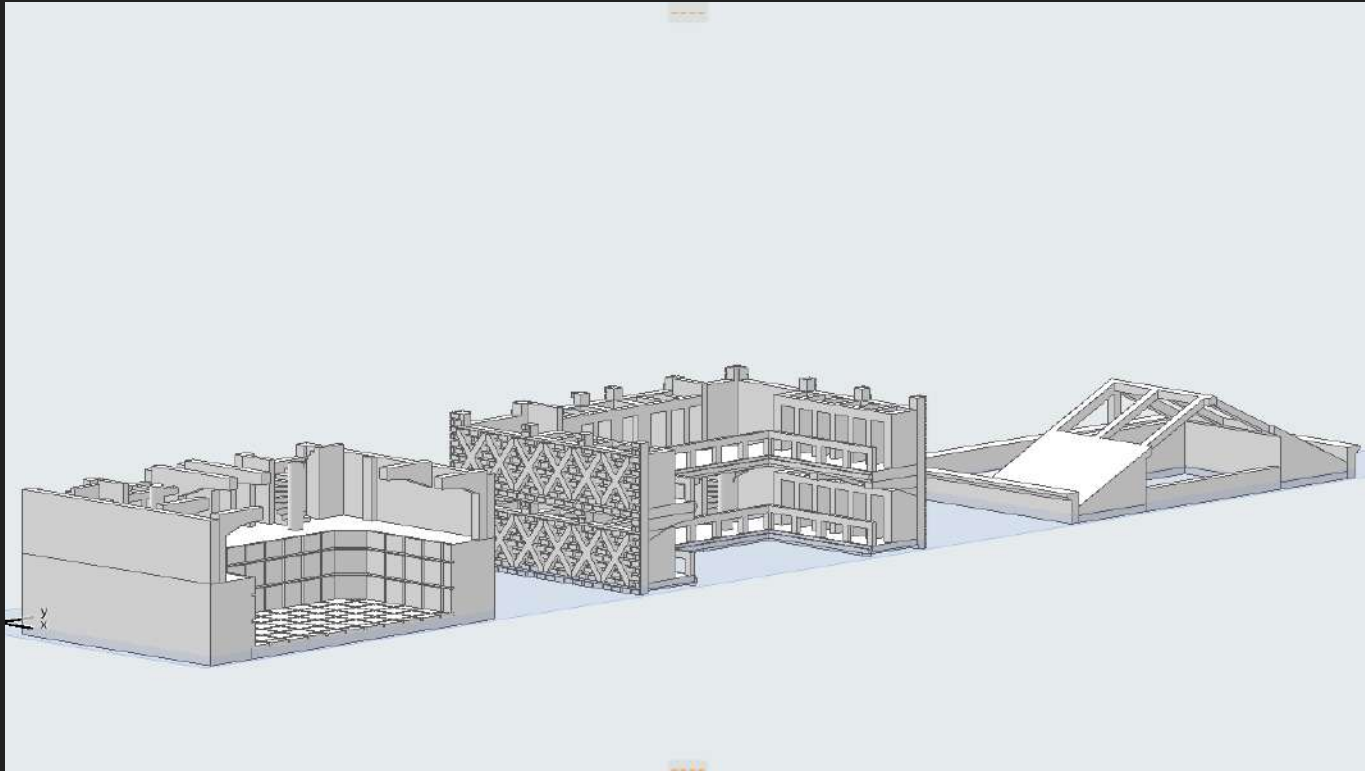
MAQUETTE VOLUME

TROYES



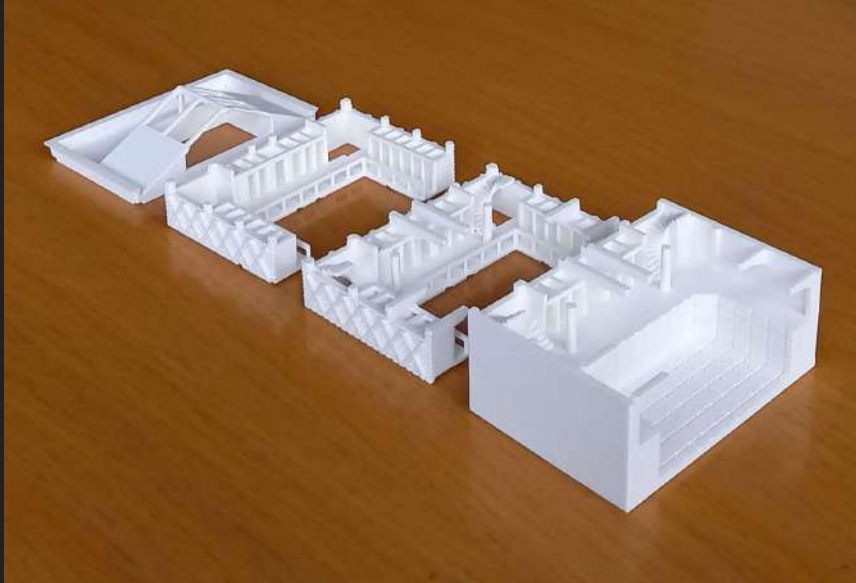
MAQUETTE VOLUME

TROYES



MAQUETTE USAGE

TROYES



MAQUETTE USAGE

Mise en valeur et explicitation d'édifices sportifs remarquables de la région Grand-Est : **LABEL ACR & JO 2024**



Mise en valeur et explicitation d'édifices sportifs remarquables de la région Grand-Est : **LABEL ACR & JO 2024**

The screenshot displays the profile of 'Label-ACR' on the Thingiverse platform. The profile header includes a cover image, the name 'Label-ACR', and statistics: 1 follower, 0 following, and 30 designs. Below the header are buttons for 'Edit profile' and 'View analytics'. The main content area shows a grid of 3D architectural models of swimming pools, each with a heart icon and a count of likes. The models are arranged in two rows of three. The first row includes: 'LA PISCINE TOURNESOL DE LINGOLSHEIM #I...', 'LE GYMNASSE DES AIGUILLETES DE VILLERS-...', and 'LA PISCINE LUCIEN-ZINS DE TROYES #INTERI...'. The second row includes: 'LA PISCINE DE SUIPPES #VOLUME (FRANCE-G...', 'LA PISCINE KIBITZENAU À STRASBOURG #IN...', and 'LA PISCINE CANETON DE SÉZANNE #INTERIE...'. The top navigation bar shows 0 favorites, 30 designs, 1 collection, 0 makes, and 0 likes. The search bar contains the URL 'https://www.thingiverse.com/label-acr/designs'.

