



SUNRISE ANDHRA PRADESH

**VISION
2029**



Mapping Andhra Pradesh M[AP] A Participative Information System for Decentralized Development in the “New Andhra Pradesh”

Nirbhay Sen, Bangaru Raju, Guru Prasad, Anne Chappuis–Graphical Monitoring Information Systems Consultants Pvt Ltd. (GMIS), Hyderabad, India

Sanjay Gupta–E.O. Secretary to Govt., Planning. Dept., & CEO, AP. State Development Planning Society (APSDPS) & DG, AP. Space Applications Centre (APSAC)

Luc de Golbéry–Consultant

FIG-2016

The context: a new state deprived of a capital and its economic activities

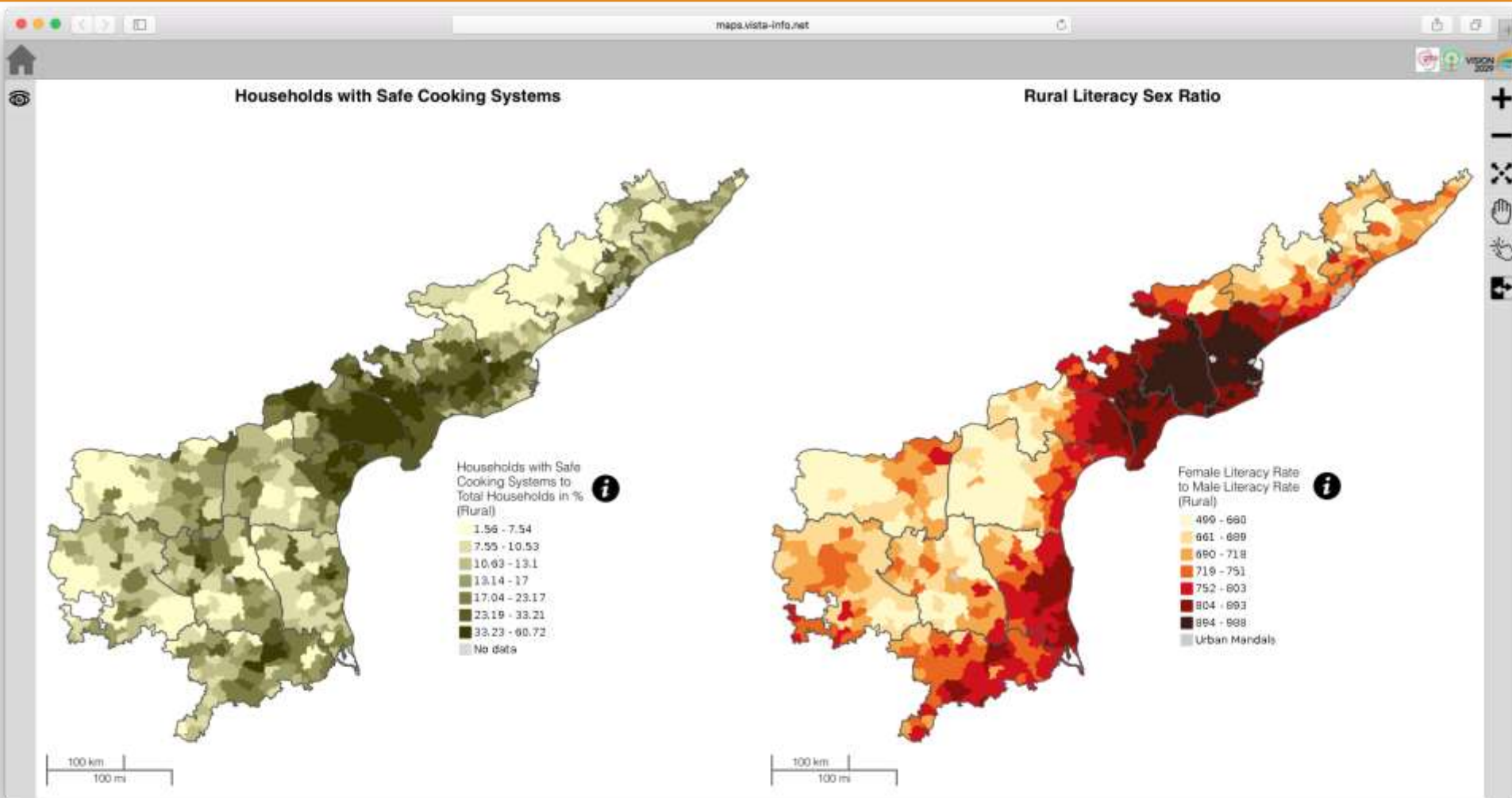


- After the bifurcation of the erstwhile Andhra Pradesh the capital, Hyderabad, went to Telangana State.
- **Andhra Pradesh faces the huge challenge of building a new capital and its economic activities.**
- The Government of Andhra Pradesh (GoAP) envisions moulding “**A Happy and Globally Competitive Society**” and becoming one of the top three states in India by 2022.
- Andhra Pradesh aims **to achieve the status of a developed state by the year 2029** and become a leading global destination by the year 2050.

Objective: Human Development Delivering 12 Basic Needs

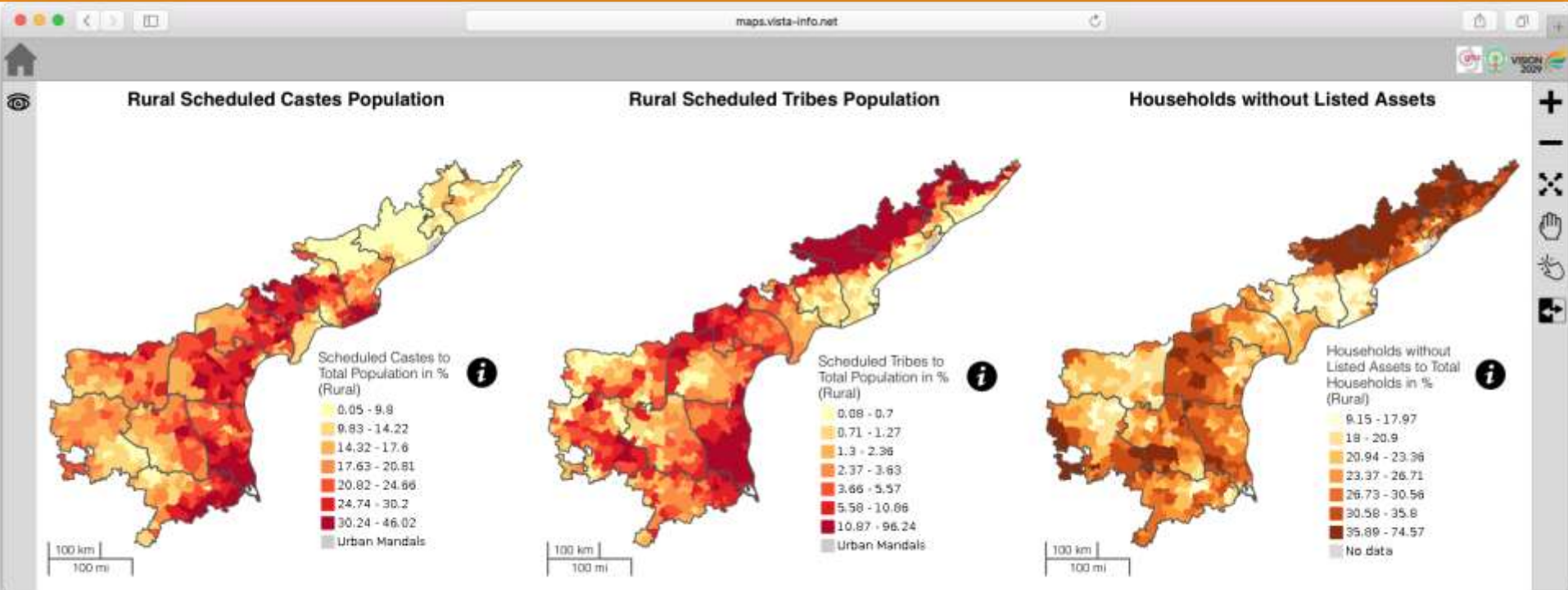
- **The immediate focus** of the government is on meeting **basic human development objectives by 2019**.
 - education
 - drinking water
 - sanitation
 - health
 - sustainability
 - gender
 - poverty eradication

Health, Gender and Sustainability



- Unsafe cooking systems are a leading cause of health problems, they damage the environment and also affect women markedly.

Poverty Eradication



- **Poverty eradication** must go hand in hand with **social justice**.
- There is a clear **geographical distribution** in extreme poverty.

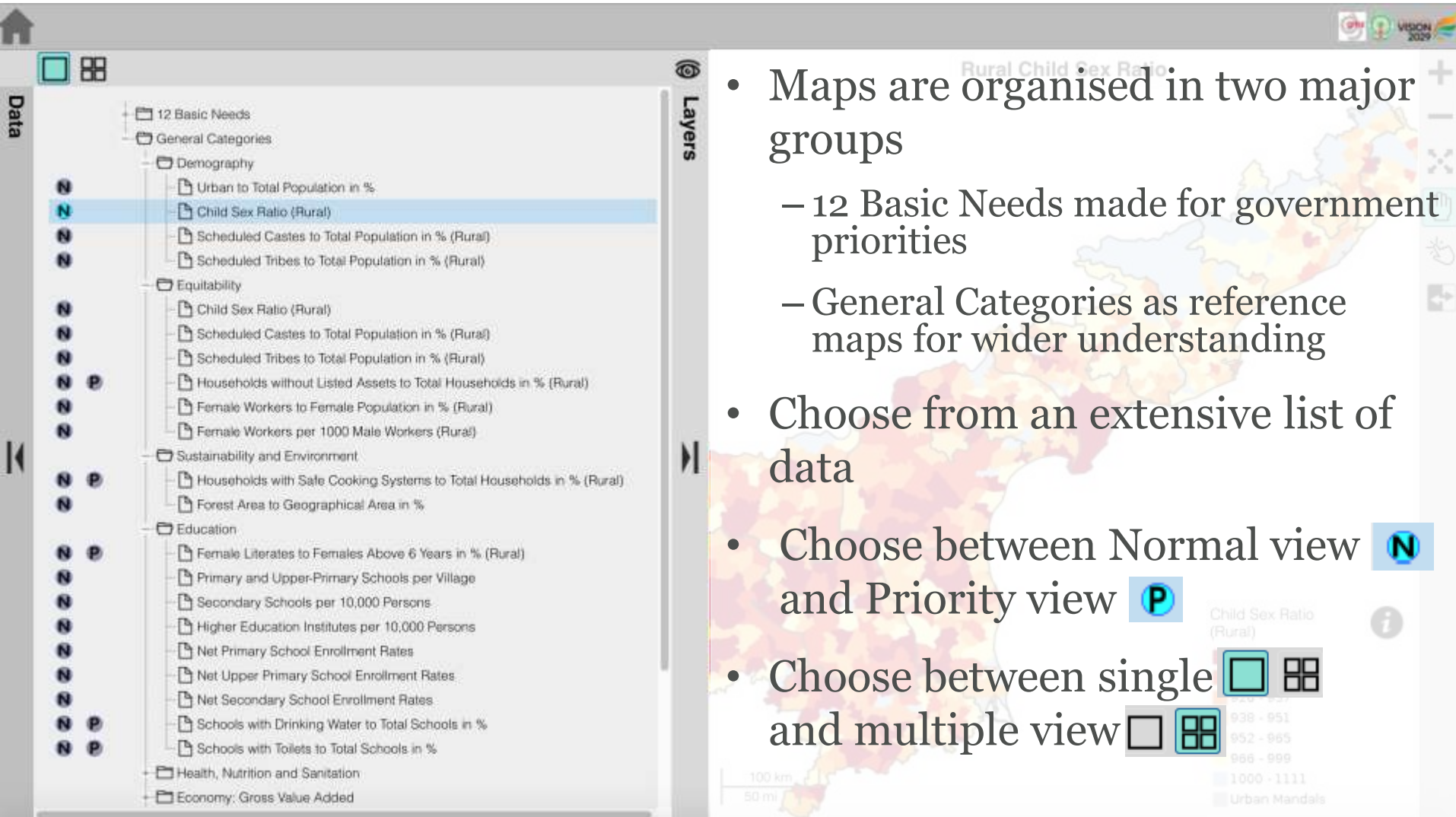
A Private and Public Collaboration

- Pro-active governance dictated that a **map centred tool** was necessary because of:
 - The **geographic imbalances** of the current situation and
 - The ambitions of the Government for Andhra Pradesh (GoAP),
- This precipitated a **collaboration** between the **GoAP**, its **Vision 2029** Management Unit and **GMIS** Consultants to build such a tool.

Mapping Andhra Pradesh: M[AP]

The screenshot displays a web browser window with the URL `maps.vista-info.net`. The page features the M[AP] logo and navigation links: HOME, ABOUT US, CONTACT US, and HELP. Logos for GMS, the Government of Andhra Pradesh, and VISION 2029 are also present. The main content area shows a map of Andhra Pradesh with a color gradient from yellow to dark blue. Below the map is a row of seven black squares. A text prompt reads: "Please Select The Geographical Level To View The Map". Below this prompt are five selection boxes, each containing a map of Andhra Pradesh at a different level: State, District, Parliamentary Constituency, Assembly Constituency, and Mandal. The footer contains the text "Copyright © 2014 - All Rights Reserved - GMS" and "Thanks to OS Templates".



Selecting Data



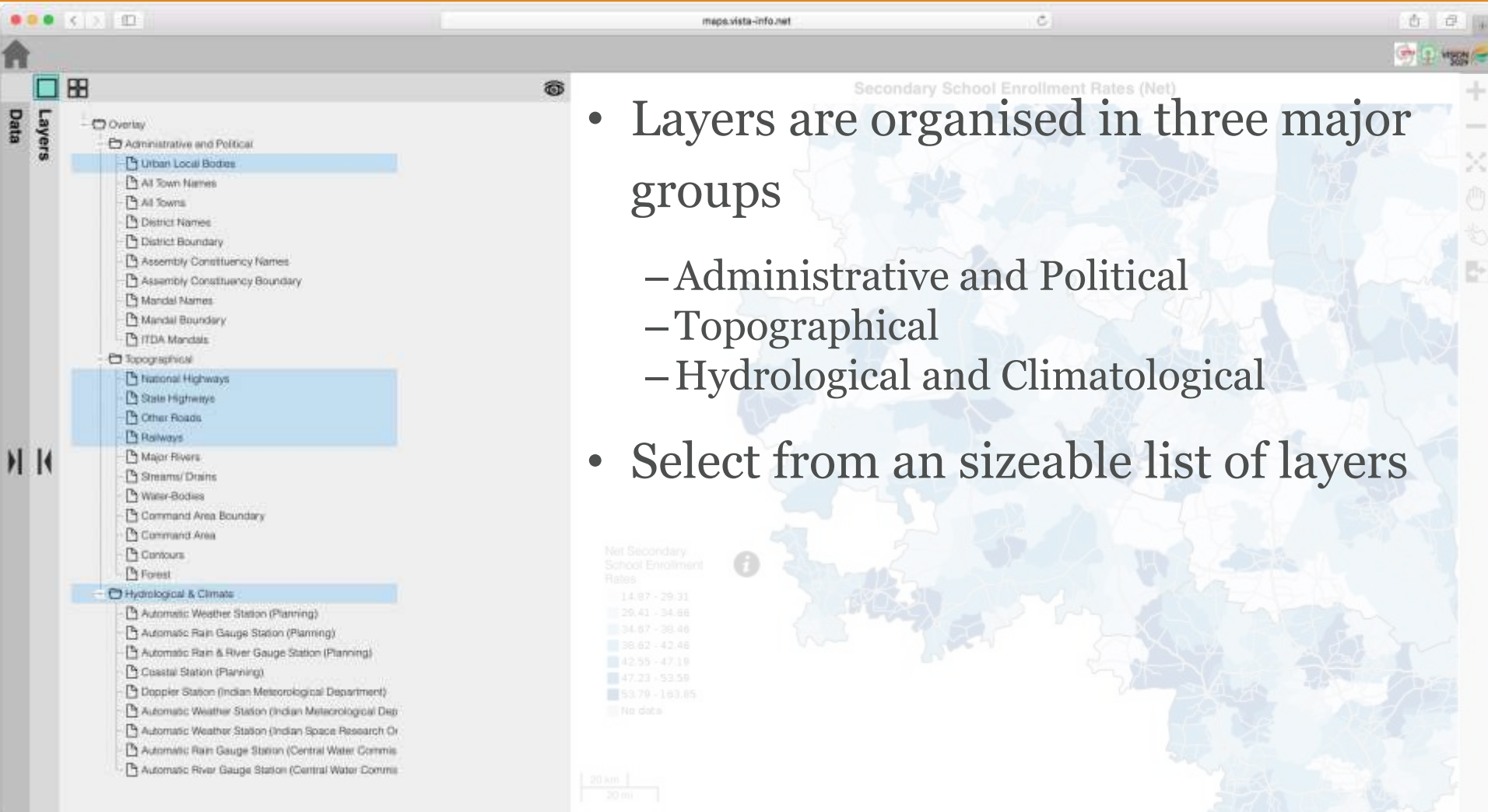
The screenshot displays a GIS application interface. On the left, a 'Data' panel lists various layers under 'General Categories'. The 'Child Sex Ratio (Rural)' layer is selected. On the right, a map titled 'Rural Child Sex Ratio' shows a color-coded distribution of the Child Sex Ratio (Rural) across a region. The legend indicates the following ranges:

- 938 - 951
- 952 - 965
- 966 - 999
- 1000 - 1111
- Urban Mandals

The interface also includes a 'Layers' panel on the right side of the map, a scale bar (100 km, 50 mi), and a north arrow.

- Maps are organised in two major groups
 - 12 Basic Needs made for government priorities
 - General Categories as reference maps for wider understanding
- Choose from an extensive list of data
- Choose between Normal view **N** and Priority view **P**
- Choose between single  and multiple view 

Selecting Layers



maps.vista-info.net

Secondary School Enrollment Rates (Net)

- Layers are organised in three major groups
 - Administrative and Political
 - Topographical
 - Hydrological and Climatological
- Select from an sizeable list of layers

Layers

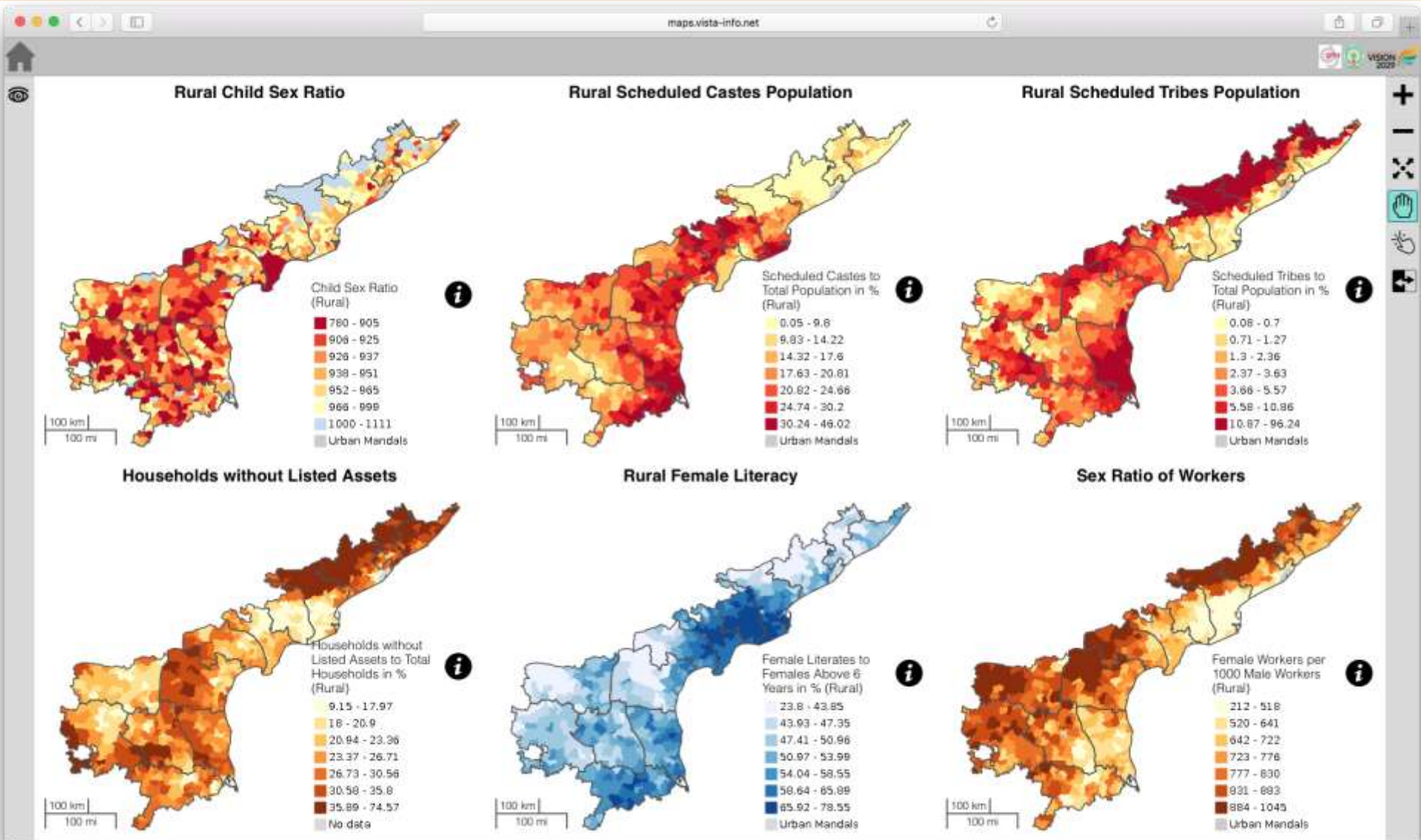
- Overlay
- Administrative and Political
 - Urban Local Bodies
 - All Town Names
 - All Towns
 - District Names
 - District Boundary
 - Assembly Constituency Names
 - Assembly Constituency Boundary
 - Mandal Names
 - Mandal Boundary
 - ITDA Mandals
- Topographical
 - National Highways
 - State Highways
 - Other Roads
 - Railways
 - Major Rivers
 - Streams/ Drains
 - Water-Bodies
 - Command Area Boundary
 - Command Area
 - Contours
 - Forest
- Hydrological & Climate
 - Automatic Weather Station (Planning)
 - Automatic Rain Gauge Station (Planning)
 - Automatic Rain & River Gauge Station (Planning)
 - Coastal Station (Planning)
 - Doppler Station (Indian Meteorological Department)
 - Automatic Weather Station (Indian Meteorological Dep
 - Automatic Weather Station (Indian Space Research Or
 - Automatic Rain Gauge Station (Central Water Commis
 - Automatic River Gauge Station (Central Water Commis

Net Secondary School Enrollment Rates

- 14.87 - 29.31
- 29.41 - 34.86
- 34.87 - 39.46
- 39.62 - 42.46
- 42.55 - 47.19
- 47.23 - 53.59
- 53.79 - 163.85
- No data

20 km
20 mi

Comparing Multiple Maps

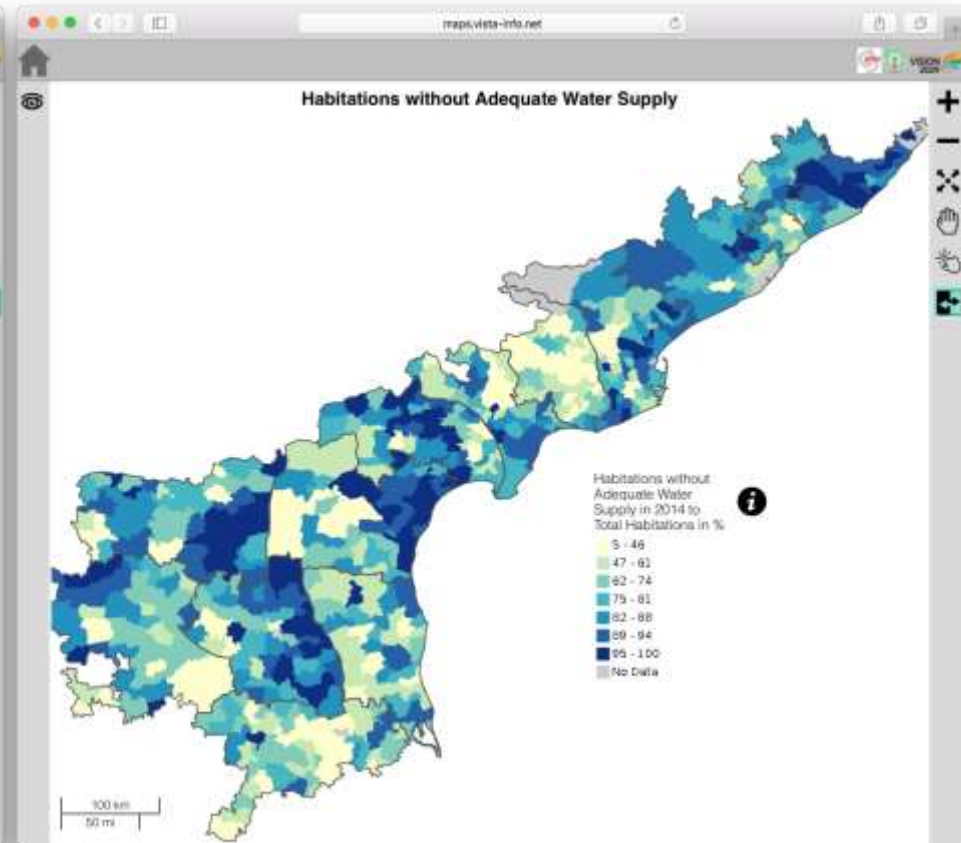
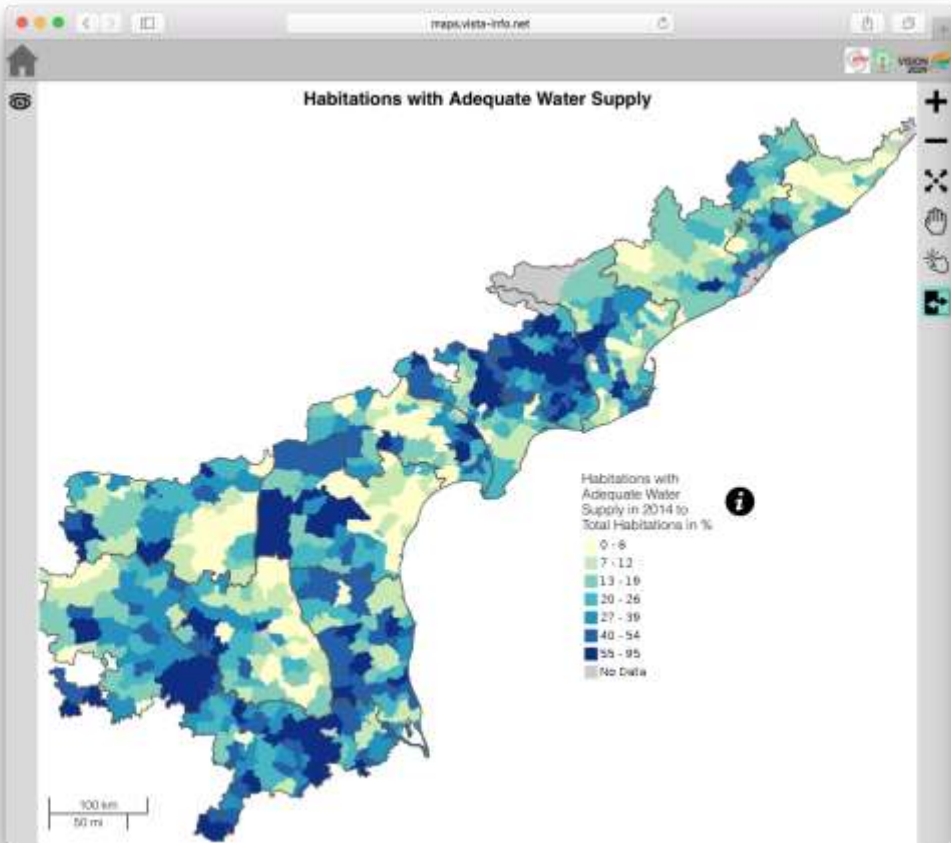


Switch View

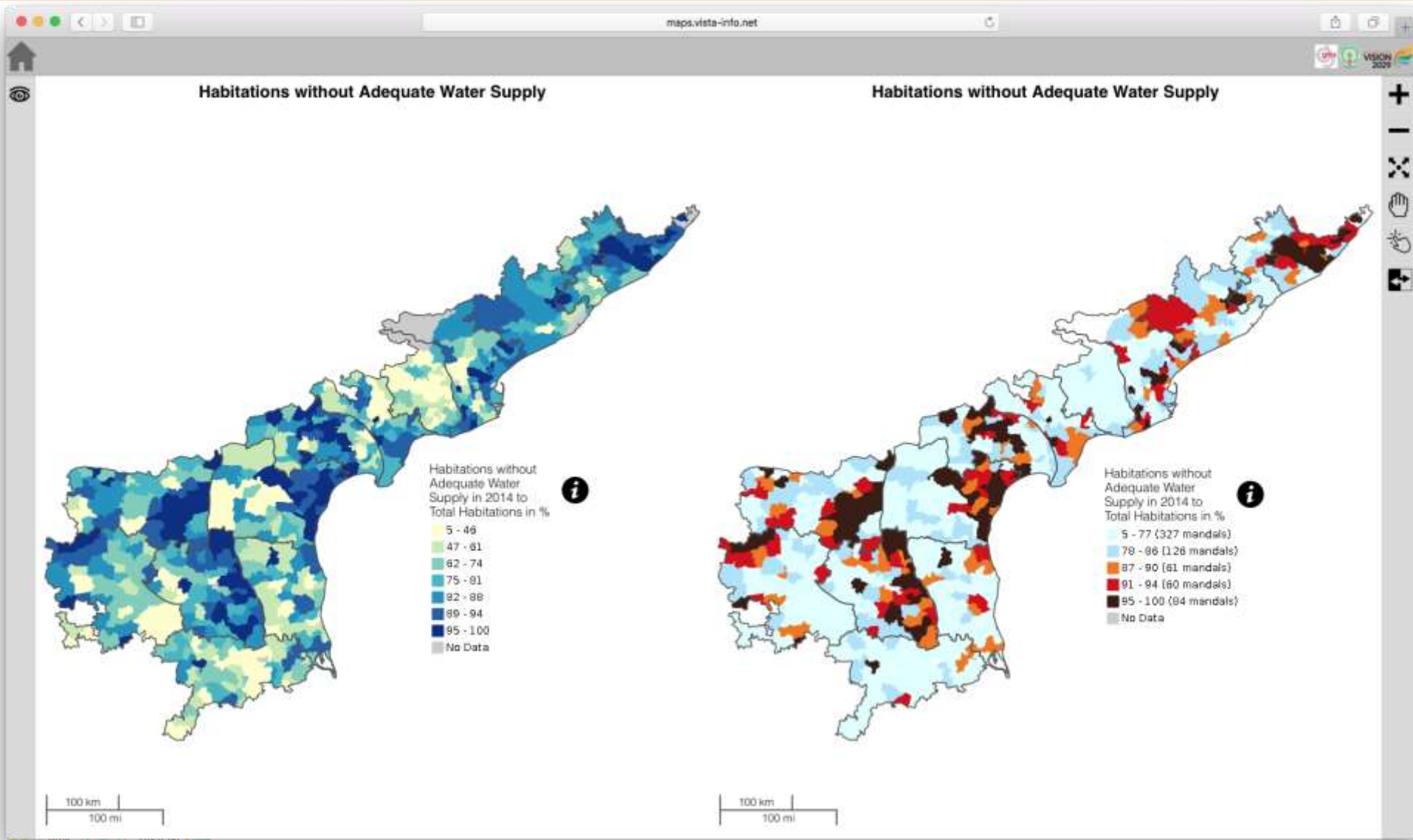
With



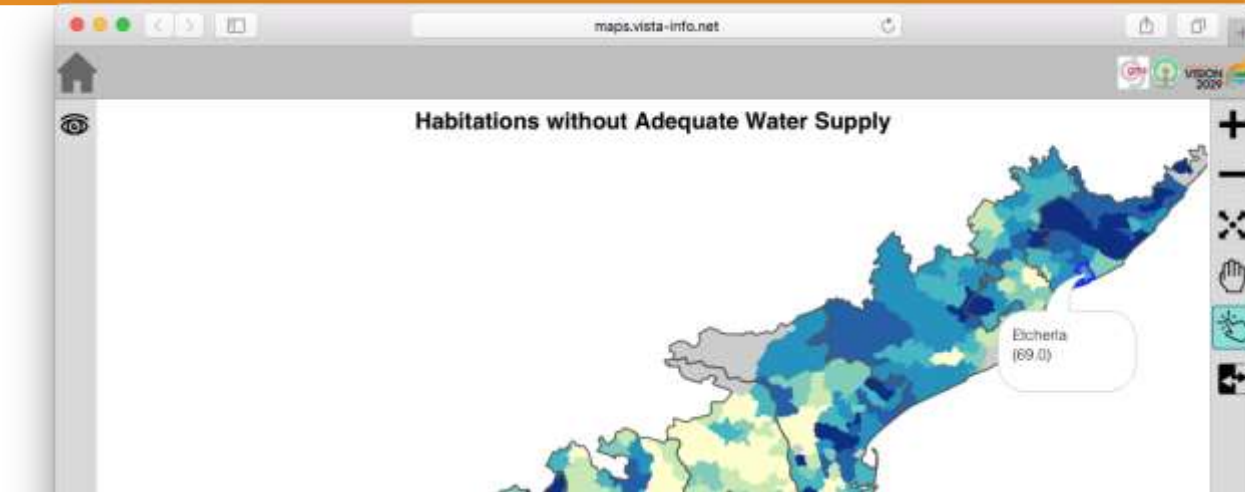
Without



Normal and Priority View

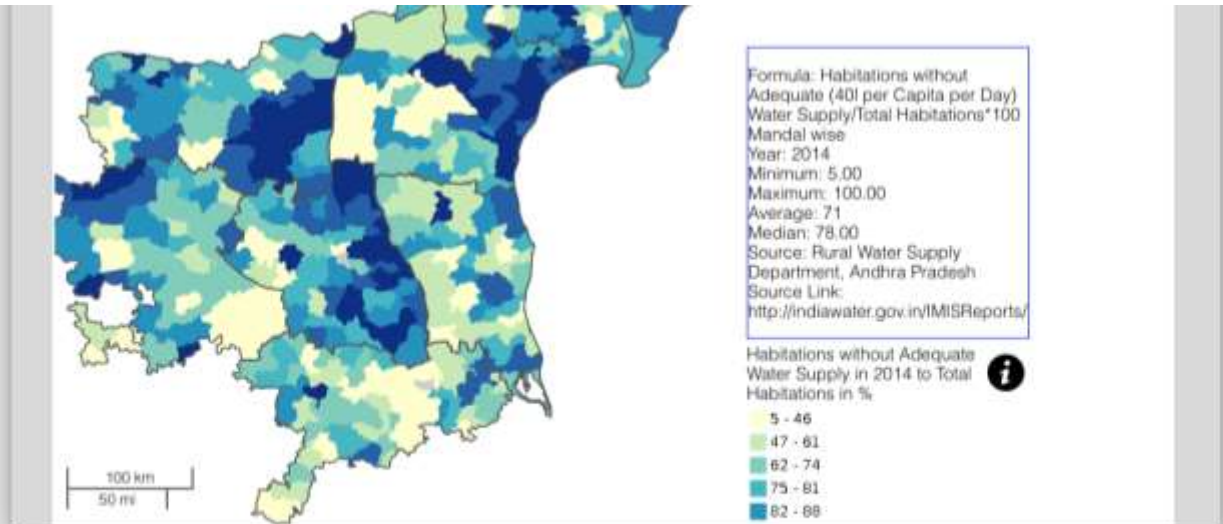


Additional Map Information



- Information roll-overs for geographical units

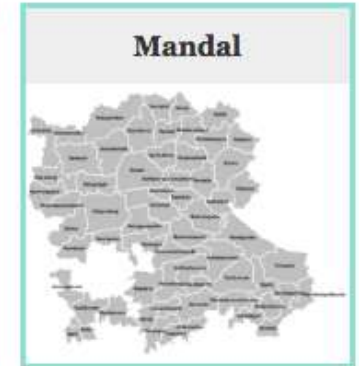
- Detailed map information



View Different Geographical Levels

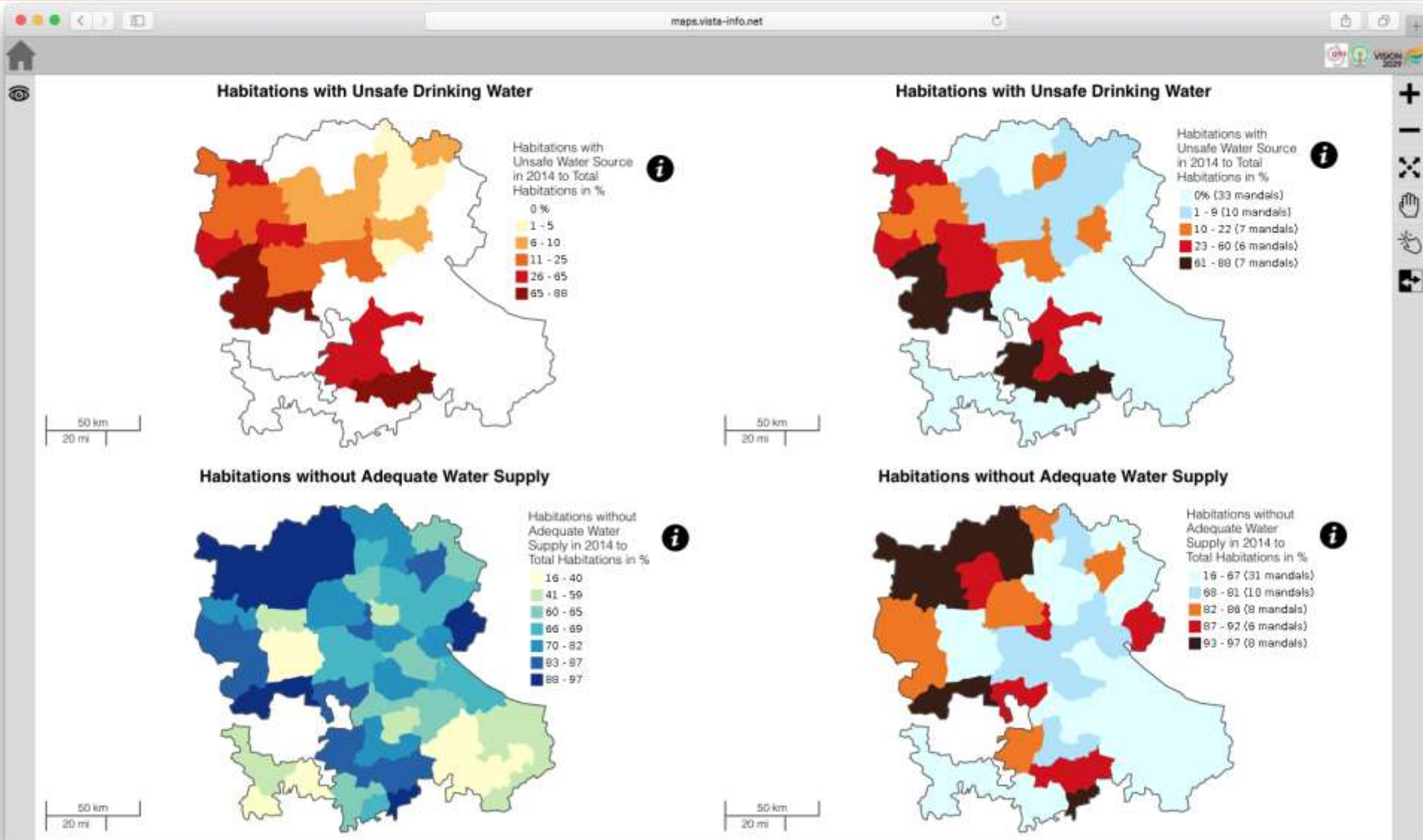


Please Select The Geographical Level To View The Map



View Different Geographical Levels

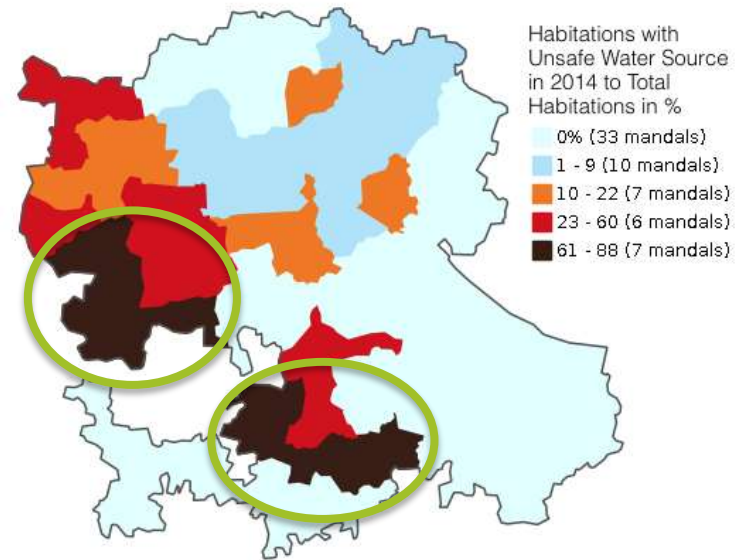
Example Anantapur District



Varied Stakeholders

- The system is designed for a large and varied user base
- The government departments can use Priority maps to schedule their interventions

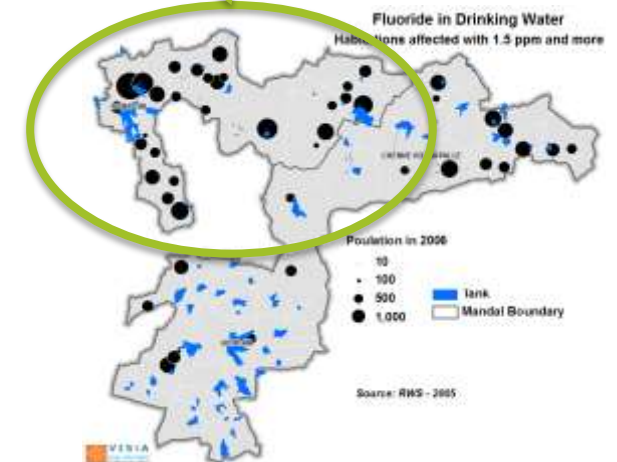
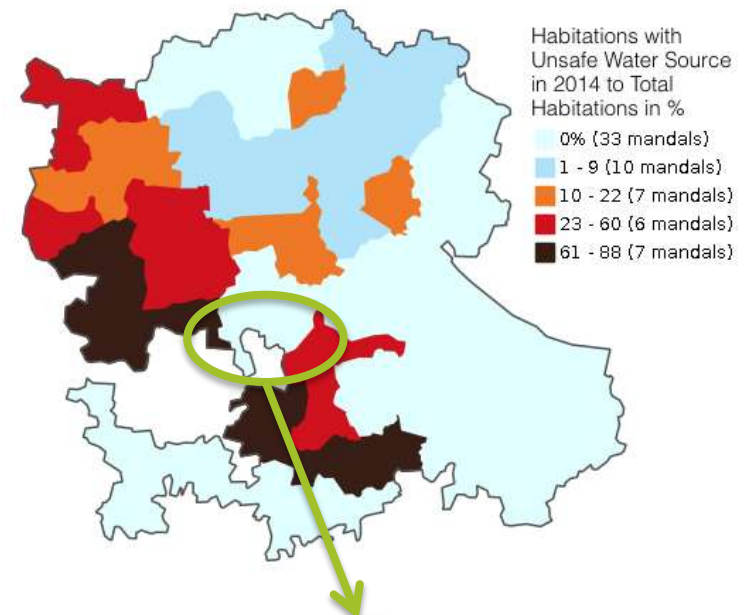
Habitations with Unsafe Drinking Water



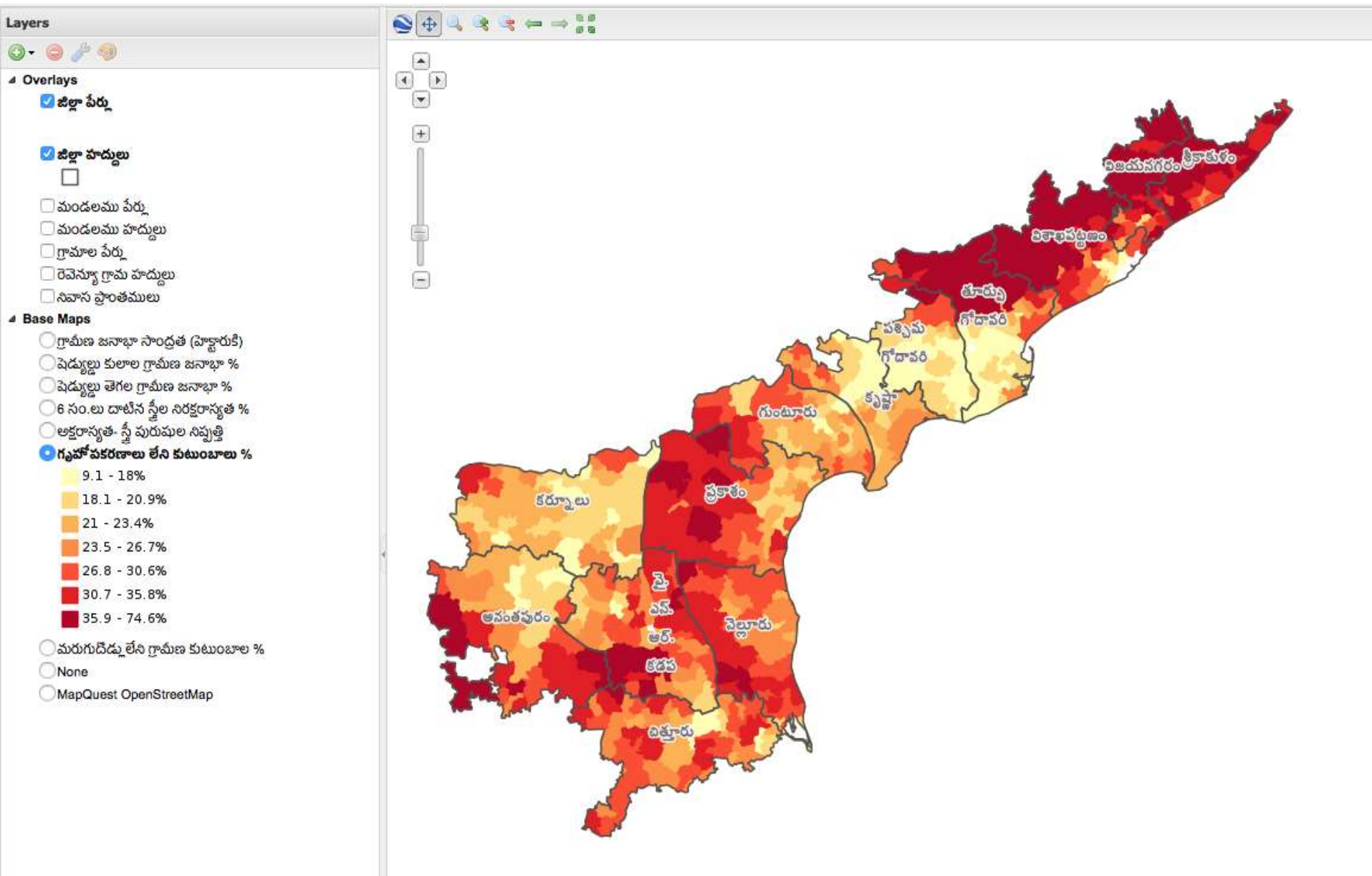
Varied Stakeholders

- The system is designed for a large and varied user base
- The government departments can use Priority maps to schedule their interventions
- Locals, their representatives and NGOs are empowered to authenticate the data and make the government answerable

Habitations with Unsafe Drinking Water



Local Language (Telugu)



Technologies used and process

- **Open Data:** The mapped statistics are derived from open data. The geo-spatial layers have been developed over many years and re-projected to follow the WGS84 standard.
- The results of pre-defined formulae, sets of pre-defined colour schemes and meta-data are stored in tables to optimize the time to display the map.
- The class limits are automated and stored in the project DB.
- **Open Source:** The databases, both numerical and geo-spatial, are managed with PostgreSQL and PostGIS, viewing is done with Geoserver.
- The web user interface is developed with Adobe Dreamweaver.

Web Atlas Flow Chart

